

**VIVAX**

**20**  
**YEARS**

**RELIABILITY**

**SAVING ENERGY**

Catalogue of  
air conditioners  
**2024**

VIVAX  
inverter

# Contents

VIVAX air conditioners 2024	6
Description of functions for VIVAX air conditioners	8
Overview of functions by models	10
Overview of remote and wired controls	12
Outdoor units	14
<b>WALL SPLIT SYSTEMS</b>	
Y Design	18
H+ Design	20
R+ Design	22
N Design	24
M Design	26
Q Design	28
X Design	30
<b>COMMERCIAL MONO SPLIT SYSTEMS</b>	
CT AERI floor split system	34
CF AERI floor-ceiling split system	36
CC AERI cassette split system	38
DT AERI duct split system	40
FS AERI self-standing floor split system	42
<b>MULTI-SPLIT SYSTEMS</b>	
Wall indoor units	46
Floor indoor units	47
Floor-ceiling indoor units	47
Cassette indoor units	48
Duct indoor units	49
Outdoor units	50
Multi-split combinations	52
Overview of outdoor units	54

## Why VIVAX?

### SAVING ENERGY

VIVAX air conditioners have the highest class of energy efficiency, up to A+++ . Exclusive inverter technology ensures savings on energy costs as much as 30%. Each remote control has a “follow me” function for additional savings through intelligent space heating.

### HEALTH

VIVAX air conditioners take care of your health. Super ionizer releases a high concentration of positive and negative ions that clean the air of allergens. Bio HEPA filtration system removes particles up to PM 0.3 in the air, ensuring clean and fresh air.

### RELIABILITY

VIVAX air conditioners work reliably at all temperatures. Compressor and condenser heaters are controlled by the main processor of the air conditioner, which enables smooth and safe operation of the device at low temperatures, even down to -32 °C. VIVAX air conditioners are very easy to start at low voltage, and the protective valve cover on the outdoor unit prevents condensed water from dripping and protects the valves from external influences.

### COMFORT AND PRACTICALITY

VIVAX air conditioners allow you to enjoy the comfort of your home. An intelligent motion sensor automatically identifies human activity in the space and adjusts the climate. The directional air outlet automatically moves horizontally and vertically, efficiently directing the flow. Memorizing the position of the air deflector will remember the last set position before turning off the device. The built-in Wi-Fi module and application enable smart control of air conditioners, so that entering in the room you can feel a perfectly cooled home or a comfortably heated space.



The guarantee for VIVAX air conditioners is 60 months with mandatory installation and mandatory annual service by an authorized service. We believe in the quality of VIVAX air conditioners and guarantee their correctness for up to 5 years. It is a regular warranty on our devices, and after purchase, additional device registration is not required in order to realize the warranty. You can find detailed information on warranty conditions and a list of authorized service providers at [vivax.hr/en/](http://vivax.hr/en/).

# VIVAX. FOREVER.

**2017**

It was developed an air conditioner that works at outdoor temperature of -32 °C, both during heating and cooling mode. 73 different air conditioners in the offer.

**2018**

The seventh generation of multi-split air conditioners. The sixth generation of commercial air conditioners. Best Buy Award 2018 / 2019.

**2019**

Popular R Design in new colours. R32 gas in all air conditioners. Corrosion protection agent in outdoor units. Qudal Award 2019 / 2020.

**2020**

The first generation of heat pumps.

**2021**

Present in more than 35 countries.

**2022**

90 different airconditioners in the offer.

**2023**

Expansion of the air conditioning range to VRF air conditioning systems.

**2024**

**VIVAX**  
**20**  
YEARS

We are proudly celebrating 20 years, always striving not only provide top quality products, but also a memorable experience.

**2004**

First VIVAX air conditioners on the market.

**2006**

The first multi-splits and the first accessories for air conditioners.

**2008**

The second generation of commercial and multi-split air conditioners.

**2013**

The fourth generation of multi-split air conditioners. The third generation of commercial air conditioners.

**2015**

The fifth generation of multi-split air conditioners. The fourth generation of commercial air conditioners. The first Wi-Fi air conditioners, 61 devices in the offer.

**2005**

First inverter, mobile and cassette air conditioners.

**2007**

The first floor-ceiling air conditioner.

**2011**

The third generation of multi-split air conditioners.

**2014**

Super free match system was introduced. 59 air conditioners in the offer.

**2016**

The sixth generation of multi-split air conditioners. The fifth generation of commercial air conditioners. 65 different air conditioners in the offer.



# Present in **more than 35** countries

Already 20 years users in **over 35 markets** have had trust in VIVAX air conditioners.

**Top quality and timeless design** have found their way to many homes, which, thanks to the VIVAX air conditioners and regardless of the season, are always at the optimum temperature.

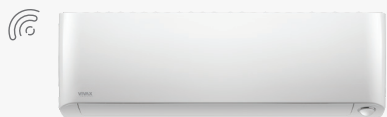




# VIVAX air conditioners 2024

## Wall split systems

**Y Design**



3,5 kW

**H+ Design**



3,5 kW | 5,3 kW

**R+ Design**



2.6 kW | 3.5 kW | 5.3 kW | 7.0 kW



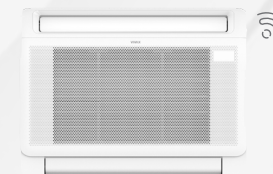
**M Design**



2.6 kW | 3.5 kW | 5.3 kW | 7.0 kW

## Commercial split systems

Floor split system  
**CT AERI**



3.5 kW | 5.0 kW

Floor-ceiling split system  
**CF AERI**



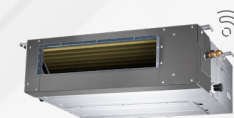
5.3 kW | 7.0 kW  
10.5 kW | 14.1 kW  
15.8 kW

Cassette split system  
**CC AERI**



3.5 kW | 5.3 kW  
7.0 kW | 10.6 kW  
14.1 kW | 15.2 kW

Duct split system  
**DT AERI**



3.5 kW | 5.3 kW  
7.0 kW | 10.6 kW  
14.1 kW | 15.2 kW

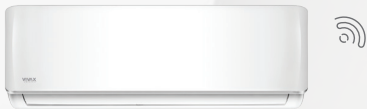
## Multi-split systems

Wall indoor unit  
**AEMI**



2.1 kW

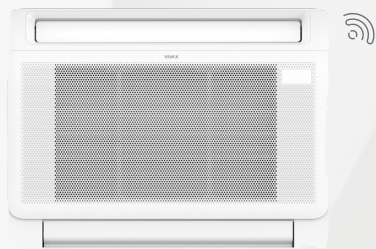
Wall indoor unit  
**AERI**



2.6 kW | 3.5 kW | 5.3 kW



Floor indoor unit  
**CT AERI**



2.6 kW | 3.5 kW | 5.0 kW

Floor-ceiling  
indoor unit  
**CF AERI**



5.3 kW

Cassette indoor  
unit  
**CC AERI**



2.6 kW | 3.5 kW | 5.3 kW

Duct indoor unit  
**DT AERI**



3.5 kW | 5.3 kW

Outdoor unit  
**COFM AERI**



4.1 kW | 5.3 kW | 6.2 kW | 7.9 kW  
8.2 kW | 10.6 kW | 12.1 kW

# Description of functions for VIVAX air conditioners

## ENERGY SAVING



### ECO mode

The new VIVAX air conditioners in ECO mode save an additional 60 % through eight-hour mode.



### 1.0 W Standby

Air conditioner in standby mode consumes 1.0 W of energy per day.



### Night mode

The temperature automatically rises or falls slightly to maintain a comfortable room temperature and to reduce energy consumption at the same time.



### Energy saving mode

This function helps the air conditioner to provide enough cooling power without the need to run at full capacity.

## HEALTH



### Biofilter

It is composed of special biological enzyme and eco filters that trap dust, neutralise and destroy bacteria, fungi and microbes.



### Catalyst filter

It eliminates toxic gases and unpleasant odours.



### Dust filter

Mesh dust filters help to stop dust particles in the air conditioner, thus improving the air quality in the room.



### Self-cleaning

The indoor unit will continue to work to dry and clean the remaining condensate.



### Ionizer

It releases negative ions, eliminates unpleasant odours, dust, smoke and pollen. Provides fresh and clean air.



### Anti-corrosion protection – gold coating

Special anti-corrosion coating for the heat exchanger protects from atmospheric phenomena and effects of aggressive environment. It helps in speeding the process of defrosting the unit and better heating efficiency.

## RELIABILITY



### The protective cover of the valve

The protection of connecting valves on the outdoor unit prevents dripping of the condensed water and protects the valves from external influences.



### Intelligent defrosting

If it is necessary, defrosting is activated automatically. It improves the efficiency of the device when heating and saves energy.



### Error detection and display

It displays a description of the error to solve the problem faster and easier.



### Refrigerant leak detection sensor

The indoor unit will display an “EC” error and will automatically stop working if refrigerant leaks to prevent damage to the compressor.



### 100 % capacity at -15 °C

Despite the low temperatures, the device works at 100 % capacity.



### Cooling in extreme conditions

Allows the device to operate in cooling mode at low outdoor temperatures.



### Operation at low voltage

Ability to work in low voltage conditions.



### Emergency function

In the case of the temperature sensor error, the ordinary air conditioner will display an error and stop operating while the VIVAX air conditioner will continue to operate, if necessary.



### Heating in extreme conditions

The device can be used for room heating at low outdoor temperatures with high efficiency.



### PTC compressor and condenser heaters

Additional heaters, one of which is used to reheat the oil in the compressor and the other improves the defrosting of the outdoor unit. Heater operation is controlled via the main processor. This method of control enables uninterrupted and safe operation of the devices when the outside temperature reaches up to -32 °C.



### 3D DC Inverter

The inverter fan motor of the indoor and outdoor unit empowers the VIVAX air conditioners to provide best-in-class performance.



**Wi-Fi ready**

The air conditioner has the ability to expand the functions by purchasing a Wi-Fi module that connects to a home wireless network.

**Multi compatibility**

The indoor unit is compatible with multi-system.

**Heating at 8 °C / 10 °C**

Protection against subcooling below 8 °C / 10 °C.

**Condensate drain pump**

Condensate drain pump from the Indoor unit.

**Wired control device**

The wired control device is installed in a fixed position on the wall.

**360° air flow**

It enables air to reach every corner of the room with individual air exhaust control from all sides of the air conditioners.

**Turbo**

Function for the powerful heating or cooling of the room.

**Follow me function**

The device automatically adjusts the temperature to the desired level with the help of an additional sensor on the remote control.

**Silent operation**

Possibility to turn off the sound signal when operating the air conditioner for a more comfortable atmosphere.

**Auto swing**

If the system has an automatic exhaust, then its louvers move up and down on their own.

**12 air flow speeds**

12 automatic fan speeds of the indoor unit.

**Motion detector**

With a built-in motion detector, the exhaust adapts to your own wishes and needs.

**Soft start**

It protects the air conditioner from high electricity voltage during start-up.

**Timer**

The timer enables the air conditioner to start and stop within 24 hours.

**Manual control**

The air conditioner can be easily turned on or off by pressing a button located on the outside of the indoor unit.

**3 air flow speeds**

Possibility to select the fan speed of the indoor unit.

**3D air flow**

It uses automatic horizontal and vertical movements of the louver to ensure equal air distribution throughout the room.

**Humidity control**

Smart sensors control the temperature and humidity from 35 % to 85 %.

**Wi-Fi control**

The air conditioner has a Wi-Fi module that connects to a home wireless network and connects to a mobile application.

**Strong air flow**

Air exhaust range up to 20 m.

**Digital display**

Hidden digital display.

**Two-way condensate drain hose**

A drain hose can be installed on both sides of the indoor unit, making installation easier.

**Louver position memory**

The air deflectors will automatically return to the position they were in when the air conditioner was turned off.

**Automatic operating mode**

By selecting this function, the air conditioner automatically sets the fan speed of the Indoor unit and the operating mode, comparing the set temperature and current room conditions.

**Last mode memory**

The air deflectors will automatically return to the position they were in when the air conditioner was turned off.

**Smart airflow**

In heating mode the air conditioner blows warm air vertically down to the floor, while in cooling mode the air conditioner blows cold air horizontally up into the ceiling.

**Whisper air**

Quiet operation of the air conditioner.

# Overview of functions by models

	ECO MODE	1.0 W STANDBY	NIGHT MODE	ENERGY SAVING MODE	BIOFILTER	CATALYST FILTER	DUST FILTER	IONIZER	SELF-CLEANING	GOLD COATING	THE PROTECTIVE COVER OF THE VALVE	INTELLIGENT DEFROSTING	ERROR DETECTION AND DISPLAY	REFRIGERANT LEAK DETECTION SENSOR	100 % CAPACITY AT -15 °C	OPERATION AT LOW VOLTAGE	PTC COMPRESSOR AND CONDENSER HEATERS	EMERGENCY FUNCTION	COOLING AT A TEMPERATURE OF -15 °C	COOLING AT A TEMPERATURE OF -20 °C	COOLING AT A TEMPERATURE OF -25 °C	COOLING AT A TEMPERATURE OF -32 °C	HEATING AT A TEMPERATURE OF -15 °C	HEATING AT A TEMPERATURE OF -20 °C	HEATING AT A TEMPERATURE OF -25 °C
Y Design	•	•	•		•		•	•	•	•	•	•	•	•	•	•	•	•				•			
H+ Design	•	•	•	•	•		•	•		•	•	•	•	•		•	•	•	•						•
R+ Design		•	•	•	•		•	•		•	•	•	•	•		•	•	•	•						•
N Design	•	•	•	•		•	•		•	•	•	•	•	•		•	•	•	•				•		
M Design		•	•	•	•		•		•	•	•	•	•	•		•	•	•	•				•		
Q Design		•	•	•		•	•		•	•	•	•	•	•		•	•	•	•				•		
X Design		•	•	•		•	•		•	•	•	•	•	•		•	•	•	•				•		
FLOOR SPLIT SYSTEMS	•	•	•	•			•		•	•	•	•	•	•		•	•	•	•						•
FLOOR-CEILING SPLIT SYSTEMS	•	•	•	•			•		•	•	•	•	•	•		•	•	•	•						•
CASSETTE SPLIT SYSTEMS	•	•	•	•			•		•	•	•	•	•	•		•	•	•	•						•
DUCT SPLIT SYSTEMS	•	•	•	•			•		•	•	•	•	•	•		•	•	•	•						•
SELF-STANDING FLOOR SPLIT SYSTEMS		•	•	•			•		•	•	•	•	•	•		•	•	•	•				•		
WALL INDOOR UNITS				•	•	•	•	•	•	•															
FLOOR INDOOR UNITS				•		•	•			•															
FLOOR-CEILING INDOOR UNITS				•		•	•			•															
CASSETTE INDOOR UNITS				•		•	•			•															
DUCT INDOOR UNITS				•		•	•			•															
OUTDOOR UNITS				•						•	•	•	•		•	•			•						•

MULTI-SPLIT

HEATING AT A TEMPERATURE OF -32 °C	
WI-FI READY	•
WI-FI CONTROL	•
FOLLOW ME FUNCTION	•
MANUAL CONTROL	•
MULTI COMPATIBILITY	•
SILENT OPERATION	•
3 AIR FLOW SPEEDS	•
TWO-WAY CONDENSATE DRAIN HOSE	•
HEATING AT 8 °C	•
HEATING AT 10 °C	•
AUTO SWING	•
3D AIRFLOW	•
LOUVER POSITION MEMORY	•
CONDENSATE DRAIN PUMP	•
12 AIR FLOW SPEEDS	•
HUMIDITY CONTROL	•
AUTOMATIC OPERATING MODE	•
WIRED CONTROL DEVICE	•
MOTION DETECTOR	•
LAST MODE MEMORY	•
360° AIR FLOW	•
TIMER	•
STRONG AIR FLOW	•
SMART AIRFLOW	•
TURBO	•
SOFT START	•
DIGITAL DISPLAY	•
WHISPER AIR	•

# Overview of remote and wired controls

## Remote control RG10N2 (D2S)

CC AERI (7.0 kW, 12.0 kW, 14.0 kW, 16.0 kW)



**BREEZE AWAY button**  
The BREEZE AWAY function avoids direct exhaust to a person or object in the room.

**VANE button**  
The VANE function adjusts the louvers on the Indoor unit.

## Wired control VIVAX-KJR-120N

CC AERI  
CF AERI  
DT AERI



**TIMER button**  
The TIMER button sets daily and weekly timer.

**DAY OFF / DELAY button**  
The DAY OFF and DELAY functions let you pause or delay your air conditioning unit without resetting the TIMER, keeping your preset schedule intact.

## Remote control RG10A (D2S)

CT AERI  
CF AERI  
CC AERI (3.5 kW, 5.0 kW)  
DT AERI  
FS AERI



**ECO GEAR button**  
The ECO GEAR function allows to enter into the energy-efficient mode in the following order: ECO › GEAR (75 %) › GEAR (50 %) › Previous setting mode › ECO.

**FAN button**  
The FUN function selects the fan speed in the following order: AUTO % › 20 % › 40 % › 60 % › 80 % › 100 %.



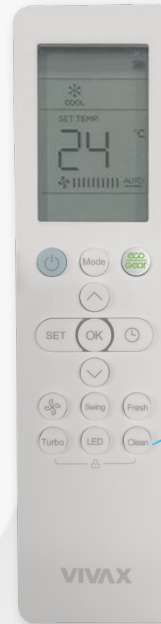
**Remote control  
RG10P1(G2HS)/BGEF**  
Y Design R32



**INTELLIGENT EYE button**  
The INTELLIGENT EYE function detects the activities of the people in the room to save energy.



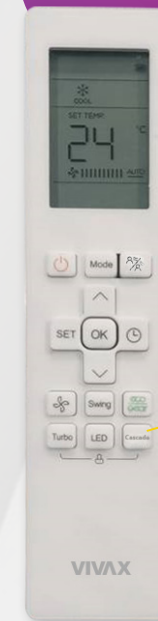
**HUMIDITY button**  
The HUMIDITY function adjusts the humidity in the room during dry operation in the range of 35 % ~ 85 %. Press the button to increase humidity in the span of 5 %.



**Remote control  
RG10B1(E)/BGEF**  
R+ Design R32



**CLEAN button**  
The CLEAN function enables or disables self-cleaning of the air conditioner.



**Remote control  
RG10X1(G2HS)/BGEF**  
H+ Design R32



**CASCADE button**  
The CASCADE function allows the entire room to be cooled evenly.



**Remote control  
RG10B1(E)/BGEF**  
N Design R32



**TURBO button**  
The TURBO function allows reaching of the desired temperature in the shortest possible time.



**SWING button**  
The SWING function allows control of the horizontal air louver.



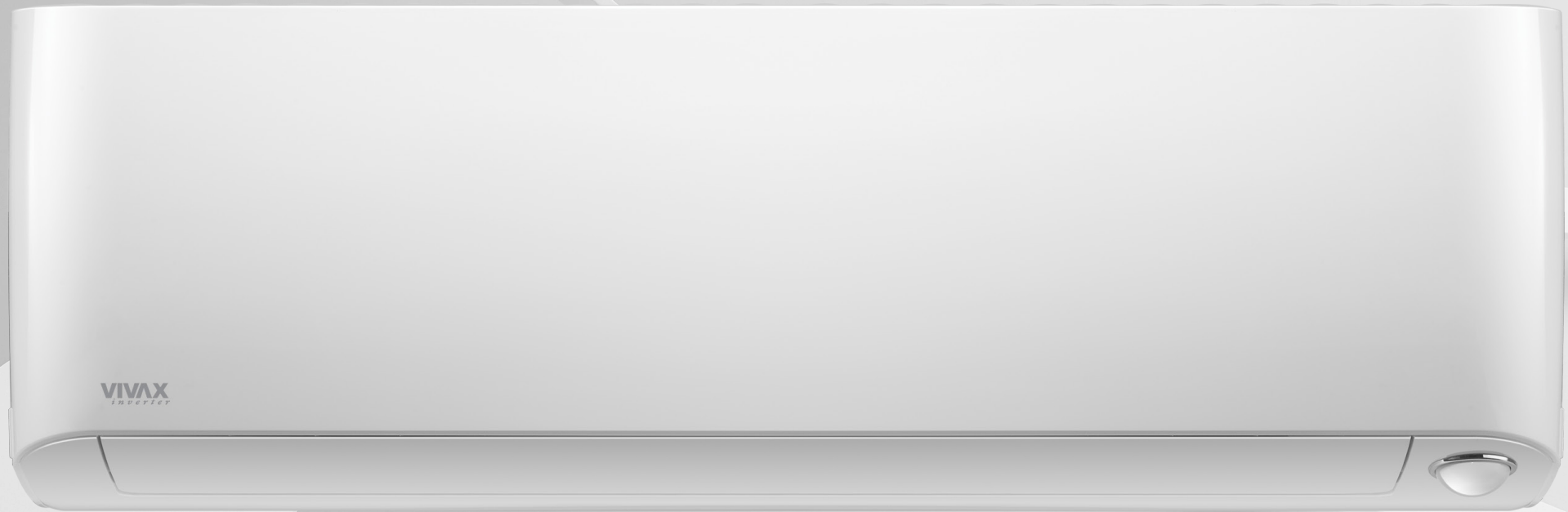
**Remote control  
RG10A1(D)/BGEF**  
M Design  
Q Design  
X Design



**SET button**  
The SET function allows selection of the additional circle-functions as Follow me function or AP mode.

# Wall split system Y Design

A+++ Cooling SEER 9.2  
A+++ Heating SCOP 5.3



## ENERGY SAVING



R32 gas



Night mode

## HEALTH



Dust filter



Self-cleaning



Biofilter



Cooling at a temp. of -32 °C



Heating at a temp. of -32 °C



The protective cover of the valve



Chassis heating belt

## RELIABILITY



3D DC Inverter



Error detection and display



Refrigerant leak detection sensor



Emergency function



Compressor heating belt



Intelligent defrosting



Operation at low voltage

## COMFORT AND CONVENIENCE



Last mode memory



Timer



Louver position memory



Motion detector



3 air flow speeds



Heating at 8 °C



Automatic operating mode



Turbo



Digital display



Humidity control



3D air flow



Manual control



Follow me function



Silent operation



Two-way condensate drain hose



Auto swing



12 air flow speeds



Soft start



Wi-Fi control

## Cooling

Model	ACP-12CH35AEYIs R32
Capacity (W)	3517 (1031-4816)
Energy efficiency class	A+++
Energy Efficiency SEER	9.2
Cooling operating range	-32 °C ≤ T ≤ 50 °C
Estimated load on cooling (W)	3500
Power input (W)	748 (102-1955)

## Heating

Capacity (W)	4250 (753-7200)
Energy efficiency class	A+++
Energy Efficiency SCOP	5.3
Heating operating range	-32 °C ≤ T ≤ 30 °C
Estimated load on heating (W)	2200
Power input (W)	924 (104-2625)

## Indoor unit

Air flow (m <sup>3</sup> / h) - HI / MID / LOW	575 / 497 / 340
Dehumidifying capacity (L / h)	1.2
Noise - Sound Pressure (dB (A)) - HI / MID / LOW	43 / 34 / 24
Sound power level (dB)	≤ 59
Packaging dimensions (mm)	985 x 370 x 350
Product dimensions (mm)	895 x 248 x 298
Gross / net weight (kg)	17.5 / 12.7

## Outdoor unit

Noise - Sound Pressure (dB (A))	≤ 55.5
Sound power level (dB)	≤ 60
Refrigerant	R32
Bracket distance (mm)	511
Packaging dimensions (mm)	915 x 370 x 615
Product dimensions (mm)	805 x 330 x 554
Gross / net weight (kg)	34,8 / 32,3

## Connections

Liquid phase pipe diameter	1 / 4"
Gas phase pipe diameter	3 / 8"
Maximum pipe length (m)	25
Maximum height difference (m)	10
Pre-filled pipe length (m)	5
Gas refill (g / m)	12

## Power Supply

Power interconnect cable (mm <sup>2</sup> )	5 x 1.5
Power Supply IU / OU 220-240 V / 1 / 50 Hz (mm <sup>2</sup> )	3 x 1.5

# A+++ Heating & cooling

Advanced inverter technology enables the air conditioner to operate efficiently and in very extreme weather conditions. It can be enjoyed in heating even at an outdoor temperature of -32 °C, and with 100 % capacity down to -15 °C.

## OPERATION AT FULL CAPACITY AT -15 °C

When temperatures drop to as low as -15 °C, VIVAX air conditioners from the Y Design series continue to operate at full capacity. In the case of such low temperatures, air conditioners in this series produce 5.3 kW of heating energy for 1.0 kW of electricity consumed.



# Motion sensor

The intelligent motion sensor can automatically identify human activity in the room and adjust the operation of the air conditioner accordingly. When people are in the room, strong cooling is activated, and when they leave it, the device continues to operate at a reduced speed.



# Wall split system H+ Design

A+++ Cooling SEER 8.5  
A++ Heating SCOP 4.6



## ENERGY SAVING



R32 gas



Night mode



Energy saving mode



1.0 W Standby



ECO mode

## HEALTH



Dust filter



Biofilter



Anti-corrosion protection - gold coating



Ionizer

## RELIABILITY



Cooling at a temp. of -15°C



Heating at a temp. of -25°C



3D DC Inverter



Error detection and display



Refrigerant leak detection sensor



Emergency function



The protective cover of the valve



Chasis heating belt



Compressor heating belt



Intelligent defrosting



Operation at low voltage

## COMFORT AND CONVENIENCE



Last mode memory



Timer



Louver position memory



Whisper air



3 air flow speeds



Heating at 8°C



Automatic operating mode



Turbo



Digital display



3D air flow



Manual control



Follow me function



Silent operation



Two-way condensate drain hose



Auto swing



12 air flow speeds



Soft start



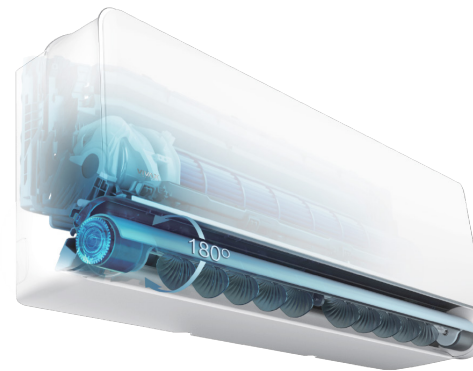
Wi-Fi ready



Smart airflow

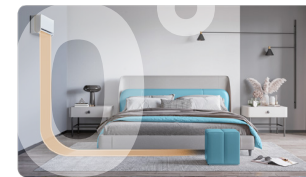


	Model	ACP-12CH35AEHI+ R32	ACP-18CH50AEHI+ R32
<b>Cooling</b>	Capacity (W)	3517 (1319-4308)	5275 (1817-6007)
	Energy efficiency class	A+++	A++
	Energy Efficiency SEER	8.5	6.3
	Cooling operating range	-15 °C ≤ T ≤ 50 °C	-15 °C ≤ T ≤ 50 °C
	Estimated load on cooling (W)	3500	5300
	Power input (W)	900 (130-1650)	1600 (140-2300)
<b>Heating</b>	Capacity (W)	3810 (879-4396)	5569 (1260-6008)
	Energy efficiency class	A++	A+
	Energy Efficiency SCOP	4.6	4.1
	Heating operating range	-25 °C ≤ T ≤ 24 °C	-20 °C ≤ T ≤ 240 °C
	Estimated load on heating (W)	2500	4100
	Power input (W)	950 (120-1500)	1680 (220-2350)
<b>Indoor unit</b>	Air flow (m³ / h) - HI / MID / LOW	700 / 515 / 425	750 / 530 / 430
	Dehumidifying capacity (L / h)	1.2	1.8
	Noise - Sound Pressure (dB (A)) - HI / MID / LOW	40 / 32.5 / 21.5 / 19	41.5 / 36.5 / 33.5 / 19
	Sound power level (dB)	53	54
	Packaging dimensions (mm)	1005 x 385 x 295	1005 x 385 x 295
	Product dimensions (mm)	920 x 321 x 211	920 x 321 x 211
	Gross / net weight (kg)	14.16 / 11.30	14.4 / 11.30
<b>Outdoor unit</b>	Noise - Sound Pressure (dB (A))	≤ 53.5	≤ 54.5
	Sound power level (dB)	≤ 62	≤ 63
	Refrigerant	R32	R32
	Bracket distance (mm)	452	511
	Packaging dimensions (mm)	887 x 337 x 610	915 x 370 x 615
	Product dimensions (mm)	765 x 303 x 555	805 x 330 x 554
	Gross / net weight (kg)	28.8 / 26.4	36.1 / 33.5
<b>Connections</b>	Liquid phase pipe diameter	1 / 4"	1 / 4"
	Gas phase pipe diameter	3 / 8"	1 / 2"
	Maximum pipe length (m)	25	30
	Maximum height difference (m)	10	20
	Pre-filled pipe length (m)	5	5
	Gas refill (g / m)	12	12
<b>Power Supply</b>	Power interconnect cable (mm²)	1.5 x 5	1.5 x 5
	Power Supply IU / OU 220-240 V / 1 / 50 Hz (mm²)	1.5 x 3	1.5 x 3

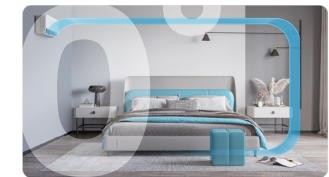


# Smart airflow

The innovative 180° wing movement allows air to flow in the horizontal or vertical direction. This option allows you to never feel the direct airflow towards you.



**HORIZONTAL AIRFLOW**



**VERTICAL AIRFLOW**



**A+++ | A++**  
 H+ series is equipped with the latest technology for energy efficiency, which achieves significant energy savings. The A+++ energy class in cooling and the A++ energy class in heating confirm this.

# Wall split system R+ Design

A+++ Cooling SEER 9.3  
A++ Heating SCOP 4.6



## ENERGY SAVING



R32 gas



Night mode



1.0 W Standby



Energy saving mode

## HEALTH



Dust filter



Biofilter



Anti-corrosion protection - gold coating



Ionizer

## RELIABILITY



Cooling at a temp. of -15°C



Heating at a temp. of -25°C



The protective cover of the valve



Chasis heating belt



3D DC Inverter



Compressor heating belt



Error detection and display



Intelligent defrosting



Refrigerant leak detection sensor



Operation at low voltage



Emergency function

## COMFORT AND CONVENIENCE



Last mode memory



Manual control



Timer



Follow me function



Louver position memory



Silent operation



Multi compatibility



Two-way condensate drain hose



3 air flow speeds



Auto swing



Heating at 8°C



Soft start



Automatic operating mode



12 air flow speeds



Turbo



Wi-Fi ready



Digital display

Model	ACP-09CH25AERI+ R32	ACP-12CH35AERI+ R32	ACP-18CH50AERI+ R32	ACP-24CH70AERI+ R32
<b>Cooling</b>				
Capacity (W)	2638 (1026-3224)	3517 (1377-4308)	5275 (3391-5900)	7034 (2110-8206)
Energy efficiency class	A+++	A+++	A++	A++
Energy Efficiency SEER	9.3	8.5	7	6.5
Cooling operating range	-15 °C ≤ T ≤ 50 °C	-15 °C ≤ T ≤ 50 °C	-15 °C ≤ T ≤ 50 °C	-15 °C ≤ T ≤ 50 °C
Estimated load on cooling (W)	2600	3500	5300	7000
Power input (W)	613 (90-1140)	977 (130-1650)	1550 (560-2050)	2510 (420-3200)
<b>Heating</b>				
Capacity (W)	2931 (821-3370)	3810 (1067-4381)	5568 (3101-5850)	7327 (1553-8206)
Energy efficiency class	A++	A++	A+	A+
Energy Efficiency SCOP	4.6	4.6	4.0	4.0
Heating operating range	-25 °C ≤ T ≤ 24 °C	-25 °C ≤ T ≤ 24 °C	-20 °C ≤ T ≤ 24 °C	-20 °C ≤ T ≤ 24 °C
Estimated load on heating (W)	2400	2600	4100	4900
Power input (W)	637 (110-1080)	977 (160-1560)	1500 (780-2000)	2130 (300-3100)
<b>Indoor unit</b>				
Air flow (m³ / h) - HI / MID / LOW	483 / 362 / 303	584 / 477 / 395	730 / 500 / 420	1020 / 830 / 640
Dehumidifying capacity (L / h)	1.0	1.2	1.8	2.4
Noise - Sound Pressure (dB (A)) - HI / MID / LOW / SI	36.5 / 29 / 24 / 20	39.5 / 33 / 25 / 21	43 / 33.5 / 28 / 23	47 / 41.5 / 30.5 / 25
Sound power level (dB)	≤ 55	≤ 55	≤ 57	≤ 63
Packaging dimensions (mm)	875 x 285 x 380	875 x 285 x 380	1045 x 305 x 410	1155 x 415 x 320
Product dimensions (mm)	802 x 189 x 297	802 x 189 x 297	965 x 215 x 319	1080 x 226 x 335
Gross / net weight (kg)	11.1 / 8.6	11.1 / 8.6	14.2 / 10.9	17.3 / 13.7
<b>Outdoor unit</b>				
Noise - Sound Pressure (dB (A))	≤ 54	≤ 54.5	≤ 55.5	≤ 60.5
Sound power level (dB)	≤ 60	≤ 62	≤ 65	≤ 67
Refrigerant	R32	R32	R32	R32
Bracket distance (mm)	452	452	511	663
Packaging dimensions (mm)	887 x 337 x 610	887 x 337 x 610	915 x 370 x 615	995 x 398 x 740
Product dimensions (mm)	765 x 303 x 555	765 x 303 x 555	805 x 330 x 554	890 x 342 x 673
Gross / net weight (kg)	28.8 / 26.4	28.7 / 26.4	36.1 / 33.5	46.9 / 43.9
<b>Connections</b>				
Liquid phase pipe diameter	1 / 4"	1 / 4"	1 / 4"	3 / 8"
Gas phase pipe diameter	3 / 8"	3 / 8"	1 / 2"	5 / 8"
Maximum pipe length (m)	25	25	30	50
Maximum height difference (m)	10	10	20	25
Pre-filled pipe length (m)	5	5	5	5
Gas refill (g / m)	12	12	12	24
<b>Power Supply</b>				
Power interconnect cable (mm²)	5 x 1.5	5 x 1.5	5 x 1.5	5 x 2.5
Power Supply IU / OU 220-240 V / 1 / 50 Hz (mm²)	3 x 1.5	3 x 1.5	3 x 1.5	3 x 2.5



# A+++ | A++

## IMPROVED ENERGY EFFICIENCY

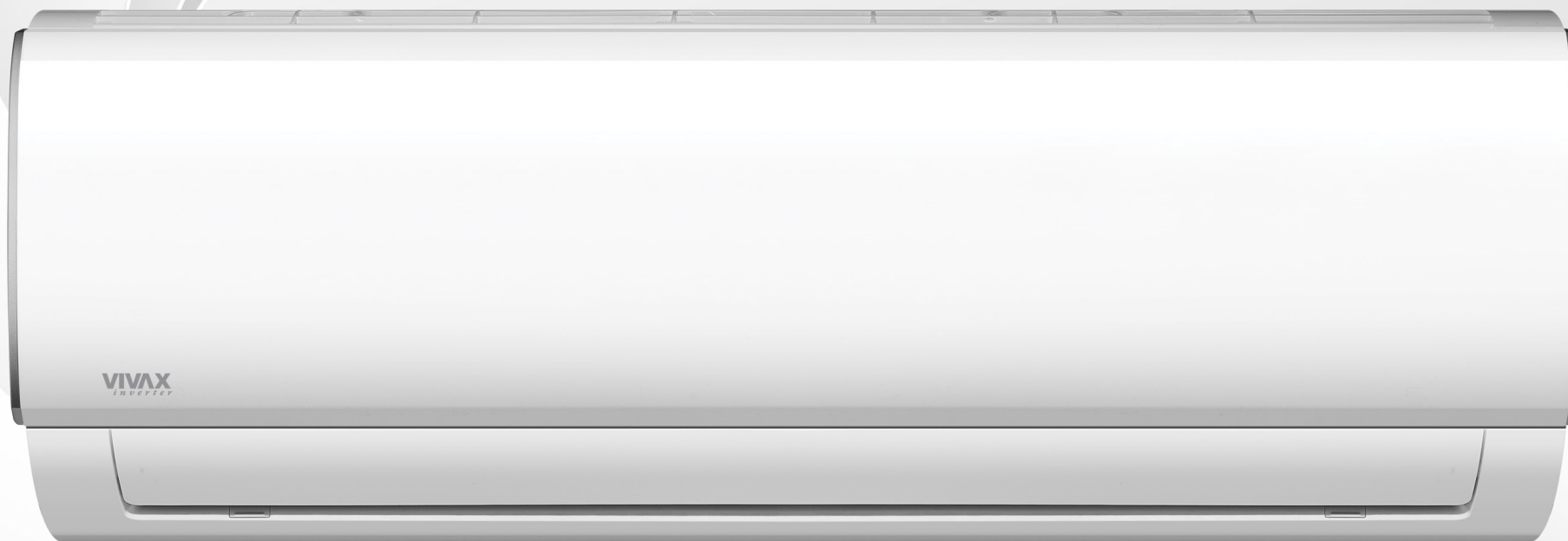
R+ Design is a new improved generation of air conditioners, which has energy efficiency A+++ in cooling and A++ in heating.



R+ Design air conditioner operates with 107 % capacity at 2 °C and can be used even when temperatures drop down to -25 °C.

# Wall split system **M Design**

A++ Cooling SEER 7.4  
A+ Heating SCOP 4.0



## ENERGY SAVING



R32 gas



Night mode



1.0 W Standby



Energy saving mode

## HEALTH



Dust filter



Self-cleaning



Anti-corrosion protection - gold coating



Biofilter

## RELIABILITY



Cooling at a temp. of -15 °C



Heating at a temp. of -15 °C



3D DC Inverter



Error detection and display



Refrigerant leak detection sensor



The protective cover of the valve



Intelligent defrosting



Operation at low voltage



Emergency function

## COMFORT AND CONVENIENCE



Last mode memory



Timer



Louver position memory



3 air flow speeds



Automatic operating mode



Turbo



Multi compatibility



Manual control



Two-way condensate drain hose



Auto swing



Soft start



Wi-Fi ready

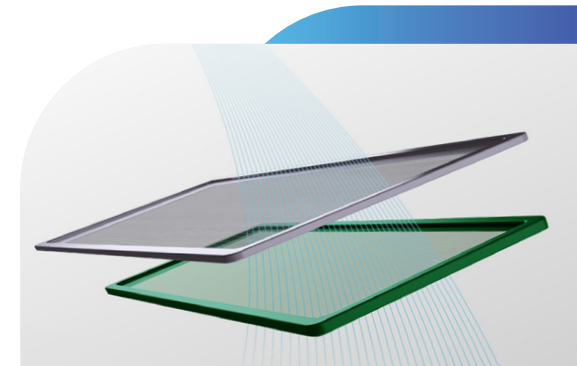


Digital display

Model	ACP-09CH25AEMI+ R32	ACP-12CH35AEMI+ R32	ACP-18CH50AEMIs R32	ACP-24CH70AEMIs R32	
<b>Cooling</b>	Capacity (W)	2638 (909-3400)	3517 (1114-4162)	5275 (3391-5832)	7034 (2081-7913)
	Energy efficiency class	A++	A++	A++	A++
	Energy Efficiency SEER	7.0	6.5	7.4	6.1
	Cooling operating range	-15 °C ≤ T ≤ 50 °C	-15 °C ≤ T ≤ 50 °C	-15 °C ≤ T ≤ 50 °C	-15 °C ≤ T ≤ 50 °C
	Estimated load on cooling (W)	2600	3500	5200	7000
Power input (W)	800 (100-1240)	1320 (100-1600)	1550 (140-2300)	2600 (420-3150)	
<b>Heating</b>	Capacity (W)	2930 (909-3370)	3810 (1084-4162)	5570 (3100-5850)	7330 (1610-7910)
	Energy efficiency class	A+	A+	A+	A+
	Energy Efficiency SCOP	4.1	4.1	4.0	4.0
	Heating operating range	-15 °C ≤ T ≤ 30 °C	-15 °C ≤ T ≤ 30 °C	-15 °C ≤ T ≤ 30 °C	-15 °C ≤ T ≤ 30 °C
	Estimated load on heating (W)	2300	2800	4100	4800
Power input (W)	930 (120-1200)	1190 (167-1400)	1570 (220-2350)	2400 (300-2750)	
<b>Indoor unit</b>	Air flow (m³ / h) - HI / MID / LOW	435 / 333 / 259	530 / 430 / 310	840 / 680 / 540	980 / 817 / 662
	Dehumidifying capacity (L / h)	1.0	1.2	1.8	2.4
	Noise - Sound Pressure (dB (A)) - HI / MID / LOW / SI	37 / 32 / 25 / 21.5	40.5 / 34.5 / 25 / 21	42.5 / 36 / 26 / 20	45 / 40.5 / 36 / 30
	Sound power level (dB)	≤ 50	≤ 54	≤ 56	≤ 59
	Packaging dimensions (mm)	780 x 270 x 365	870 x 270 x 365	1035 x 295 x 385	1120 x 405 x 315
	Product dimensions (mm)	715 x 194 x 285	805 x 194 x 285	957 x 213 x 302	1040 x 220 x 327
	Gross / net weight (kg)	8.8 / 6.7	9.5 / 7.3	13 / 10	15.8 / 12.3
<b>Outdoor unit</b>	Noise - Sound Pressure (dB (A))	≤ 55	≤ 55	≤ 56	≤ 59
	Sound power level (dB)	≤ 59	≤ 64	≤ 63	≤ 67
	Refrigerant	R32	R32	R32	R32
	Bracket distance (mm)	452	452	511	663
	Packaging dimensions (mm)	835 x 300 x 540	835 x 300 x 540	915 x 370 x 615	995 x 398 x 740
	Product dimensions (mm)	720 x 270 x 495	720 x 270 x 495	805 x 330 x 554	890 x 342 x 673
Gross / net weight (kg)	22.8 / 21	22.8 / 21	35.4 / 32.7	45.9 / 42.9	
<b>Connections</b>	Liquid phase pipe diameter	1 / 4"	1 / 4"	1 / 4"	3 / 8"
	Gas phase pipe diameter	3 / 8"	3 / 8"	1 / 2"	5 / 8"
	Maximum pipe length (m)	25	25	30	50
	Maximum height difference (m)	10	10	20	25
	Pre-filled pipe length (m)	5	5	5	5
	Gas refill (g / m)	12	12	12	24
<b>Power Supply</b>	Power interconnect cable (mm²)	5 x 1.5	5 x 1.5	5 x 1.5	5 x 2.5
	Power Supply IU / OU 220-240 V / 1 / 50 Hz (mm²)	3 x 1.5	3 x 1.5	3 x 1.5	3 x 2.5

## BIO FILTRATION SYSTEM

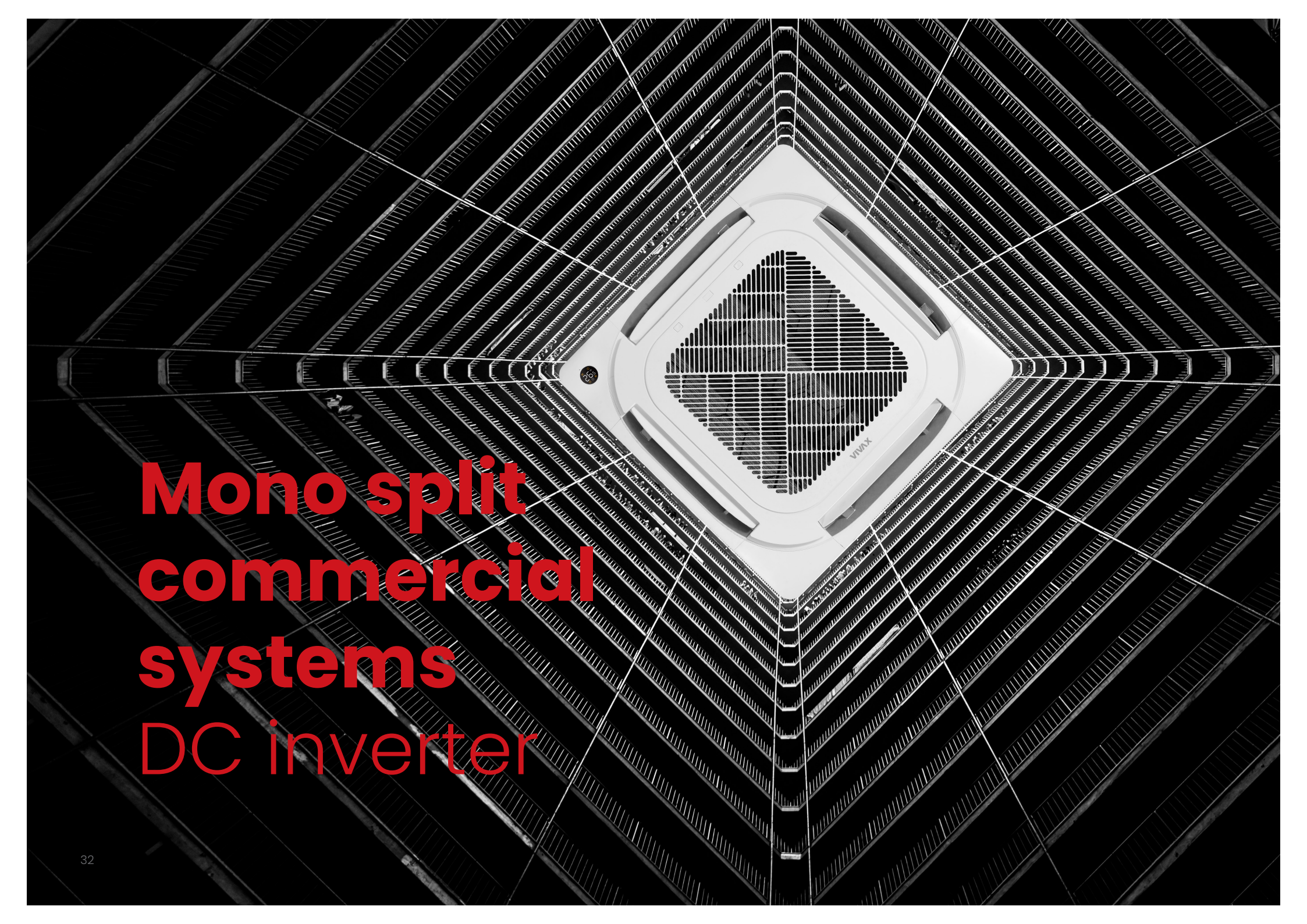
It is composed of special biological enzyme and eco filters that trap dust, neutralise and destroy bacteria, fungi and microbes.



## REMOTE CONTROL

The M Design series allows to control the air conditioners wherever you are, with the addition of a Wi-Fi module. V-Smart technology in this series of air conditioners does not only focus on management, but delivers a complete solution depending on the daily needs of consumers.

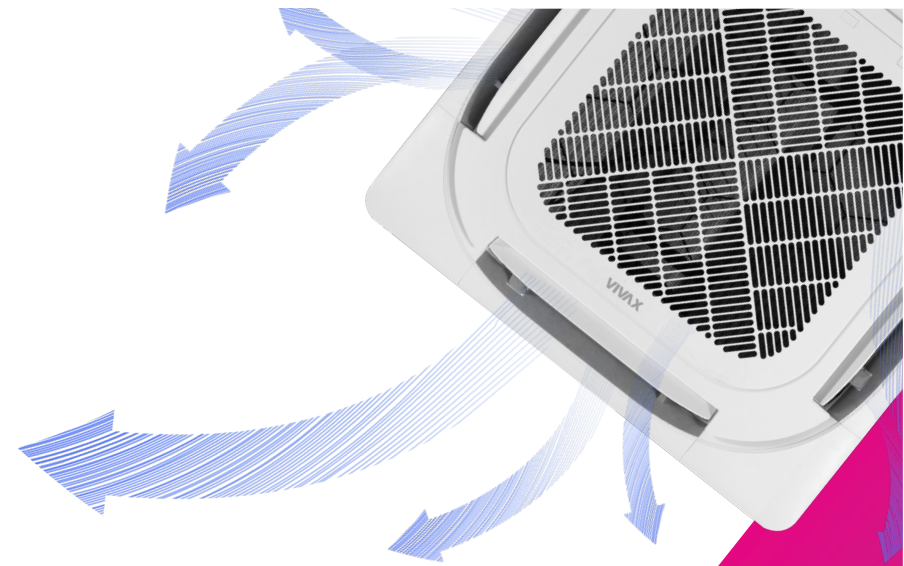




**Mono split  
commercial  
systems  
DC inverter**

# 3D air flow

VIVAX air conditioning solutions combine vertical and horizontal automatic blowing for equally and comfortable air flow in the room. With 3D airflow, cold or heated air reaches every corner of the room, providing a high level of comfort. With cassette units from 7.0 kW and more, each louver can be operated separately.



## WIDE RANGE OF CAPACITY OF THE DEVICES

VIVAX has the right solution for both residential and commercial spaces, regardless of the size or shape of the space to be air-conditioned. VIVAX commercial air conditioners come with a wide range of nominal capacity of outdoor units from 3.52 kW to 18.17 kW, which allows a wide application of these devices.



# Twin system - more combinations than before

Air conditioning units can be installed in a twin system with 2 indoor units of the same type and size connected to one outdoor unit, which is twice the size of the indoor unit. This feature helps to improve the air distribution inside the room.

In a twin system, one of the indoor units must be set up as the main unit and the other as the secondary unit. Only the main unit can be controlled, while the secondary takes over the main unit settings.



# Floor split system

## CT AERI

A++ Cooling SEER 7.3  
A+ Heating SCOP 4.0



### ENERGY SAVING



R32 gas



Night mode



ECO mode



Dust filter



Self-cleaning



1.0 W Standby



Energy saving mode



Anti-corrosion protection - gold coating

### HEALTH

### RELIABILITY



Cooling at a temp. of -15°C



Heating at a temp. of -20°C



3D DC Inverter



Error detection and display



Refrigerant leak detection sensor



Emergency function



The protective cover of the valve



Chasis heating belt



Compressor heating belt



Intelligent defrosting



Operation at low voltage

### COMFORT AND CONVENIENCE



Last mode memory



Timer



Louver position memory



Multi compatibility



3 air flow speeds



Heating at 8°C



Automatic operating mode



Turbo



Digital display



Manual control



Follow me function



Silent operation



Two-way condensate drain hose



Auto swing



Smart airflow



Soft start



Wi-Fi ready



	Model	ACP-12CT35AERI+ R32	ACP-18CT50AERI+ R32
Cooling	Capacity (W)	3520 (770-4100)	4980 (2640-5570)
	Energy efficiency class	A++	A++
	Energy Efficiency SEER	7.3	6.7
	Cooling operating range	-15 °C ≤ T ≤ 50 °C	-15 °C ≤ T ≤ 50 °C
	Estimated load on cooling (W)	3500	5000
	Power input (W)	1000 (170-1350)	1500 (650-1950)
Heating	Capacity (W)	3810 (450-4690)	5280 (2200-6300)
	Energy efficiency class	A+	A+
	Energy Efficiency SCOP	4.0	4.0
	Heating operating range	-20 °C ≤ T ≤ 24 °C	-20 °C ≤ T ≤ 24 °C
	Estimated load on heating (W)	2600	4000
	Power input (W)	980 (150-1300)	1420 (600-1900)
Indoor unit	Air flow (m³ / h) - HI / MID / LOW	650 / 580 / 490	780 / 690 / 600
	Dehumidifying capacity (L / h)	1.2	1.8
	Noise - Sound Pressure (dB (A)) - HI / MID / LOW	37 / 34 / 27	41 / 38 / 32
	Sound power level (dB)	≤ 54	≤ 55
	Packaging dimensions (mm)	865 x 280 x 719	865 x 280 x 719
	Product dimensions (mm)	794 x 200 x 621	794 x 200 x 621
	Gross / net weight (kg)	18.8 / 14.9	18.8 / 14.9
Outdoor unit	Noise - Sound Pressure (dB (A))	≤ 54	≤ 55
	Sound power level (dB)	≤ 62	≤ 63
	Refrigerant	R32	R32
	Bracket distance (mm)	452	511
	Packaging dimensions (mm)	887 x 337 x 610	915 x 370 x 615
	Product dimensions (mm)	765 x 303 x 555	805 x 330 x 554
	Gross / net weight (kg)	29 / 26.6	35.2 / 32.5
Connections	Liquid phase pipe diameter	1 / 4"	1 / 4"
	Gas phase pipe diameter	3 / 8"	1 / 2"
	Maximum pipe length (m)	25	30
	Maximum height difference (m)	10	20
	Pre-filled pipe length (m)	5	5
	Gas refill (g / m)	12	12
Interconnect cable	Outdoor unit power supply (mm²)	3 x 1.5	3 x 2.5
	Indoor unit power supply (mm²)	3 x 1.5	3 x 1.5
	Connection (mm²)	4 x 1.5	4 x 1.5
	Power Supply	~220-240 V / 1 / 50 Hz; Indoor unit	



## Double air exhaust

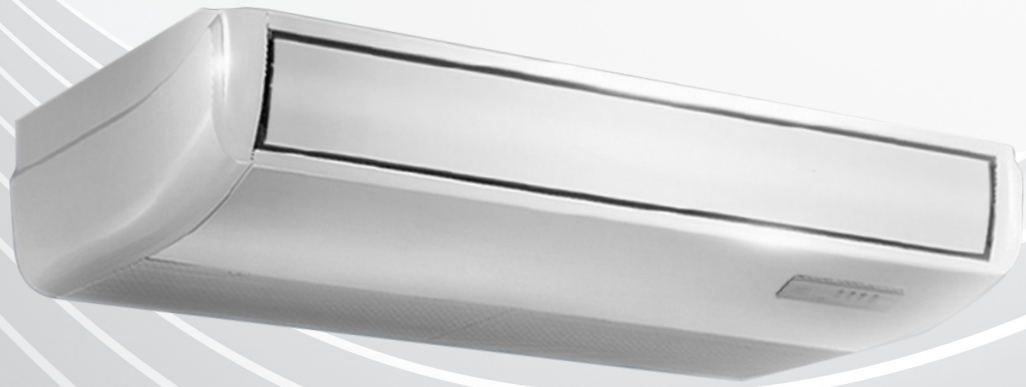
Floor split systems have air exhaust on two sides for even more efficient heating and cooling. Deflectors intelligently direct cold air up and hot air down, to set the perfect temperature quickly and efficiently without blowing air directly at the people in the room.



# Floor-ceiling split system

## CF AERI

A++ Cooling SEER 6.4  
A+ Heating SCOP 4.1



### ENERGY SAVING



R32 gas



Night mode



ECO mode



Dust filter



Self-cleaning



1.0 W Standby



Energy saving mode



Anti-corrosion protection - gold coating

### HEALTH

### RELIABILITY



Cooling at a temp. of -15°C



Heating at a temp. of -20°C



3D DC Inverter



Error detection and display



Refrigerant leak detection sensor



Emergency function



The protective cover of the valve



Chasis heating belt



Compressor heating belt



Intelligent defrosting



Operation at low voltage

### COMFORT AND CONVENIENCE



Last mode memory



Timer



Louver position memory



Multi compatibility



3 air flow speeds



Heating at 8°C



Automatic operating mode



Turbo



Digital display



Wired control device



Manual control



Follow me function



Silent operation



Two-way condensate drain hose



Auto swing



Smart airflow

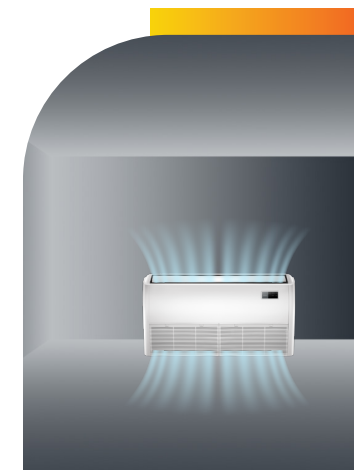


Soft start



Wi-Fi ready

Model	ACP-18CF50AERI+ R32	ACP-24CF70AERI+ R32	ACP-36CF105AERI+ R32	ACP-48CF140AERI+ R32	ACP-55CF160AERI+ R32	
<b>Cooling</b>	Capacity (W)	5280 (2710-5860)	7030 (3220-7770)	10550 (2730-11780)	14070 (3520-15240)	15830 (4100-16710)
	Energy efficiency class	A++	A++	A++	A++	A++
	Energy Efficiency SEER	6.2	6.1	6.4	6.1	6.1
	Cooling operating range	-15 °C ≤ T ≤ 50 °C	-15 °C ≤ T ≤ 50 °C	-15 °C ≤ T ≤ 50 °C	-15 °C ≤ T ≤ 50 °C	-15 °C ≤ T ≤ 50 °C
	Estimated load on cooling (W)	5400	7200	10500	14000	15500
Power input (W)	1450 (670-2027)	2300 (747-2930)	4000 (890-4300)	5000 (900-5950)	5650 (1100-6650)	
<b>Heating</b>	Capacity (W)	5570 (2420-6300)	7620 (2720-8290)	11720 (2810-12780)	16120 (4100-17000)	18170 (4400-19640)
	Energy efficiency class	A+	A+	A+	A+	A+
	Energy Efficiency SCOP	4.0	4.0	4.1	4.0	4.0
	Heating operating range	-20 °C ≤ T ≤ 24 °C	-20 °C ≤ T ≤ 24 °C	-20 °C ≤ T ≤ 24 °C	-20 °C ≤ T ≤ 24 °C	-20 °C ≤ T ≤ 24 °C
	Estimated load on heating (W)	4000	5500	8600	11200	11900
Power input (W)	1500 (540-1640)	2050 (650-2850)	3350 (780-3950)	5100 (1000-6050)	6050 (1050-7100)	
<b>Indoor unit</b>	Air flow (m³ / h) - HI / MID / LOW	958 / 839 / 723	1192 / 1023 / 853	1955 / 1728 / 1504	2100 / 1850 / 1600	2200 / 1950 / 1650
	Dehumidifying capacity (L / h)	1.8	2.4	3.6	4.8	5.5
	Noise – Sound Pressure (dB (A)) - HI / MID / LOW / SI	43.5 / 41 / 36.5 / 24	49 / 46 / 43 / 32	51 / 47.5 / 44.5 / 39	53 / 50 / 45 / 36	54 / 50.5 / 46.5 / 38
	Sound power level (dB)	≤ 57	≤ 55	≤ 64	≤ 67	≤ 67
	Packaging dimensions (mm)	1145 x 755 x 318	1145 x 755 x 318	1725 x 755 x 318	1725 x 755 x 318	1725 x 755 x 318
	Product dimensions (mm)	1068 x 675 x 235	1068 x 675 x 235	1650 x 675 x 235	1650 x 675 x 235	1650 x 675 x 235
Gross / net weight (kg)	33.3 / 28	33.1 / 28	48 / 41.5	48.5 / 41.7	49.2 / 42.3	
<b>Outdoor unit</b>	Noise – Sound Pressure (dB (A))	≤ 56	≤ 61	≤ 61	≤ 66	≤ 68
	Sound power level (dB)	≤ 65	≤ 66	≤ 70	≤ 73	≤ 73
	Refrigerant	R32	R32	R32	R32	R32
	Bracket distance (mm)	511	663	673	634	634
	Packaging dimensions (mm)	915 x 370 x 615	995 x 398 x 740	1090 x 500 x 885	1095 x 495 x 1480	1095 x 495 x 1480
	Product dimensions (mm)	805 x 330 x 554	890 x 342 x 673	946 x 410 x 810	952 x 415 x 1333	952 x 415 x 1333
Gross / net weight (kg)	35.2 / 32.5	46.9 / 43.9	85 / 80.5	118.3 / 103.7	121.2 / 107	
<b>Connections</b>	Liquid phase pipe diameter	1 / 4"	3 / 8"	3 / 8"	3 / 8"	3 / 8"
	Gas phase pipe diameter	1 / 2"	5 / 8"	5 / 8"	5 / 8"	5 / 8"
	Maximum pipe length (m)	30	50	75	75	75
	Maximum height difference (m)	20	25	30	30	30
	Pre-filled pipe length (m)	5	5	5	5	5
	Gas refill (g / m)	12	24	24	24	24
<b>Interconnect cable</b>	Outdoor unit power supply (mm²)	3 x 2.5	3 x 2.5	5 x 2.5	5 x 2.5	5 x 2.5
	Indoor unit power supply (mm²)	3 x 1.5	3 x 1.5	3 x 1.5	3 x 1.5	3 x 1.5
	Connection (mm²)	4 x 1.5	4 x 1.5	4 x 1.5	4 x 1.5	4 x 1.5
	Power Supply	~220-240 V / 1 / 50 Hz; IU		~220-240 V / 1 / 50 Hz IU, ~380-415 V / 3 / 50 Hz OU		



## LARGE AIR FLOW

The unit has the function of horizontal exhaust and automatic vertical exhaust, which ensures a more even and comfortable air flow.

## POSSIBILITY OF FRESH AIR SUPPLY

Clean air from outside can be brought into the room through pipes, keeping the air in the room fresh and healthy.



## 360° EXHAUST

The 4-way ceiling exhaust allows 360° air flow. Each louver can be operated separately. When the air conditioner is restarted, the louvers return to the previously used position so that the usual preferred settings can be enjoyed.

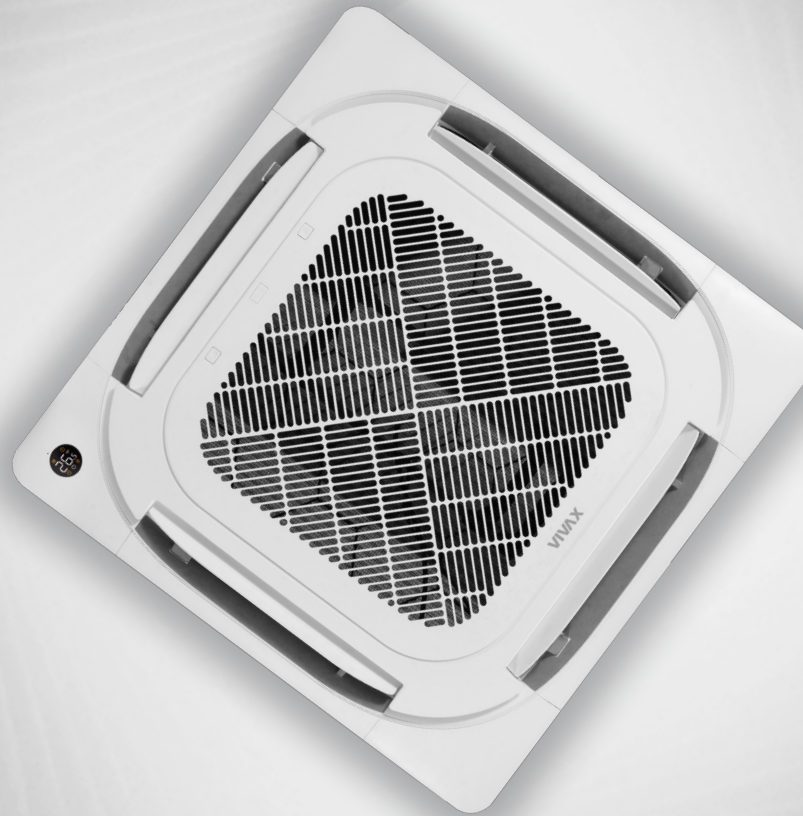
## NEW PANEL DESIGN

The new panel design and indoor unit fan ensure optimized aerodynamic performance and improved noise reduction to whisper volume levels.

Cassette split system

# CC AERI

A++ Cooling SEER 6.6  
A+ Heating SCOP 4.1



### ENERGY SAVING



R32 gas



Night mode



ECO mode



Dust filter



Self-cleaning



1.0 W Standby



Energy saving mode



Anti-corrosion protection - gold coating

### HEALTH

### RELIABILITY



Cooling at a temp. of -15°C



Heating at a temp. of -20°C



3D DC inverter



Error detection and display



Refrigerant leak detection sensor



Emergency function



Last mode memory



Timer



Louver position memory



Multi compatibility



3 air flow speeds



Heating at 8°C



Automatic operating mode



Turbo



Digital display



Condensate drain pump

### COMFORT AND CONVENIENCE



Wired control device



Manual control



Follow me function



Silent operation



Two-way condensate drain hose



Auto swing



Strong air flow



Soft start



Wi-Fi ready

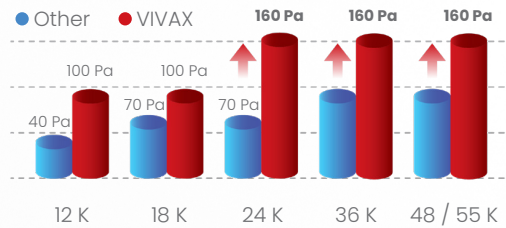


360° air flow

Model	ACP-12CC35AERI+ R32	ACP-18CC50AERI+ R32	ACP-24CC70AERI+ R32	ACP-36CC105AERI+ R32	ACP-48CC140AERI+ R32	ACP-55CC160AERI+ R32	
<b>Cooling</b>	Capacity (W)	3520 (850-4160)	5280 (2900-5590)	7030 (3300-7910)	10550 (2700-11430)	14070 (3520-15830)	15240 (4100-16710)
	Energy efficiency class	A++	A++	A++	A++	A++	A++
	Energy Efficiency SEER	6.6	6.3	6.2	6.4	6.1	6.3
	Cooling operating range	-15 °C ≤ T ≤ 50 °C	-15 °C ≤ T ≤ 50 °C	-15 °C ≤ T ≤ 50 °C	-15 °C ≤ T ≤ 50 °C	-15 °C ≤ T ≤ 50 °C	-15 °C ≤ T ≤ 50 °C
	Estimated load on cooling (W)	3500	5300	7000	10500	14000	15300
	Power input (W)	1015 (160-1450)	1550 (720-2040)	2320 (780-2748)	4000 (890-4150)	4650 (800-5900)	5000 (980-6200)
<b>Heating</b>	Capacity (W)	3810 (470-4340)	5570 (2370-6100)	7620 (2810-8940)	11140 (2780-12660)	16120 (4100-17290)	18170 (4400-19930)
	Energy efficiency class	A+	A+	A+	A+	A+	A+
	Energy Efficiency SCOP	4.1	4.1	4.0	4.0	4.0	4.0
	Heating operating range	-20 °C ≤ T ≤ 24 °C	-20 °C ≤ T ≤ 24 °C	-20 °C ≤ T ≤ 24 °C	-20 °C ≤ T ≤ 24 °C	-20 °C ≤ T ≤ 24 °C	-20 °C ≤ T ≤ 24 °C
	Estimated load on heating (W)	2700	4200	6000	8200	11000	11900
	Power input (W)	1020 (125-1390)	1560 (700-1950)	1900 (610-2700)	3000 (780-4000)	4580 (900-5500)	5550 (1020-6700)
<b>Indoor unit</b>	Air flow (m³ / h) - HI / MID / LOW	620 / 520 / 330	660 / 540 / 300	1300 / 1140 / 1000	1800 / 1600 / 1400	1970 / 1780 / 1580	2000 / 1850 / 1650
	Dehumidifying capacity (L / h)	1.2	1.8	2.4	3.6	4.8	5.5
	Noise - Sound Pressure (dB (A)) - HI / MID / LOW / SI	42 / 38.5 / 31.5 / 25.5	44 / 41 / 31.5 / 25	45.5 / 42.5 / 39.5 / 27	50 / 47.5 / 44.5 / 39	51 / 48.5 / 46.5 / 37.5	53 / 50.5 / 48 / 40
	Sound power level (dB)	≤ 55	≤ 59	≤ 57	≤ 63	≤ 65	≤ 65
	Product packaging dimensions (mm)	715 x 640 x 295	715 x 640 x 295	910 x 910 x 250	910 x 910 x 290	910 x 910 x 330	910 x 910 x 330
	Panel packaging dimensions (mm)	715 x 700 x 115	715 x 700 x 115	1035 x 1035 x 90	1035 x 1035 x 90	1035 x 1035 x 90	1035 x 1035 x 90
	Product dimensions (mm)	570 x 570 x 245	570 x 570 x 245	830 x 830 x 205	830 x 830 x 245	830 x 830 x 287	830 x 830 x 287
	Panel dimension (mm)	620 x 620 x 50	620 x 620 x 50	950 x 950 x 55	950 x 950 x 55	950 x 950 x 55	950 x 950 x 55
	Gross / net product weight (kg)	18.8 / 16.1	19 / 16.2	25.4 / 21.6	31.2 / 27.2	33.5 / 29.3	33.5 / 29.3
	Gross / net panel weight (kg)	4.3 / 2.7	4.3 / 2.7	9 / 6	9 / 6	9 / 6	9 / 6
<b>Outdoor unit</b>	Noise - Sound Pressure (dB (A))	≤ 57	≤ 58	≤ 67	≤ 70	≤ 73	≤ 73
	Sound power level (dB)	≤ 62	≤ 65	≤ 67	≤ 70	≤ 73	≤ 73
	Refrigerant	R32	R32	R32	R32	R32	R32
	Bracket distance (mm)	452	511	663	673	634	634
	Packaging dimensions (mm)	887 x 337 x 610	915 x 370 x 615	995 x 398 x 740	1090 x 500 x 885	1095 x 495 x 1480	1095 x 495 x 1480
	Product dimensions (mm)	765 x 303 x 555	805 x 330 x 554	890 x 342 x 673	946 x 410 x 810	952 x 415 x 1333	952 x 415 x 1333
	Gross / net weight uredaja (kg)	29 / 26.6	35.2 / 32.5	46.9 / 43.9	85 / 80.5	118.3 / 103.7	121.2 / 107
<b>Connections</b>	Liquid phase pipe diameter	1 / 4"	1 / 4"	3 / 8"	3 / 8"	3 / 8"	3 / 8"
	Gas phase pipe diameter	3 / 8"	1 / 2"	5 / 8"	5 / 8"	5 / 8"	5 / 8"
	Maximum pipe length (m)	25	30	50	75	75	75
	Maximum height difference (m)	10	20	25	30	30	30
	Pre-filled pipe length (m)	5	5	5	5	5	5
	Gas refill (g / m)	12	12	24	24	24	24
<b>Interconnect cable</b>	Outdoor unit power supply (mm²)	3 x 1.5	3 x 2.5	3 x 2.5	5 x 2.5	5 x 2.5	5 x 2.5
	Indoor unit power supply (mm²)	3 x 1.5	3 x 1.5	3 x 1.5	3 x 1.5	3 x 1.5	3 x 1.5
	Connection (mm²)	4 x 1.5	4 x 1.5	4 x 1.5	4 x 1.5	4 x 1.5	4 x 1.5
Power supply	~220-240 V / 1 / 50 Hz; Indoor and outdoor unit			~220-240 V / 1 / 50Hz IU, ~380-415 V / 3 / 50Hz OU			

## STATIC PRESSURE

Maximum static pressure is 160 Pa.

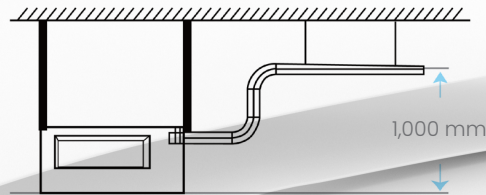


# Duct split system DT AERI

A++ Cooling SEER 6.6  
A+ Heating SCOP 4.2

## BUILT-IN CONDENSATE DRAIN PUMP

The drain pump raises condensate up to 1.000 mm.



### ENERGY SAVING

- R32 gas
- Night mode
- ECO mode
- 1.0 W Standby
- Energy saving mode

### HEALTH

- Dust filter
- Self-cleaning
- Anti-corrosion protection - gold coating

### RELIABILITY

- Cooling at a temp. of -15°C
- Heating at a temp. of -20°C
- 3D DC inverter
- Error detection and display
- Refrigerant leak detection sensor
- Emergency function
- The protective cover of the valve
- Chasis heating belt
- Compressor heating belt
- Intelligent defrosting
- Operation at low voltage

### COMFORT AND CONVENIENCE

- Last mode memory
- Timer
- Louver position memory
- Multi compatibility
- 3 air flow speeds
- Heating at 8°C
- Automatic operating mode
- Turbo
- Digital display
- Condensate drain pump
- Wired control device
- Manual control
- Follow me function
- Silent operation
- Two-way condensate drain hose
- Auto swing
- Strong air flow
- Soft start
- Wi-Fi ready

	Model	ACP-12DT35AERI+ R32	ACP-18DT50AERI+ R32	ACP-24DT70AERI+ R32	ACP-36DT105AERI+ R32	ACP-48DT140AERI+ R32	ACP-55DT160AERI+ R32
<b>Cooling</b>	Capacity (W)	3520 (530-3910)	5280 (1320-6160)	7090 (3230-7920)	10550 (2726-11750)	14070 (3520-15830)	15240 (4100-17290)
	Energy efficiency class	A++	A++	A++	A++	A++	A++
	Energy Efficiency SEER	6.5	6.5	6.6	6.1	6.1	6.1
	Cooling operating range	-15 °C ≤ T ≤ 50 °C	-15 °C ≤ T ≤ 50 °C	-15 °C ≤ T ≤ 50 °C	-15 °C ≤ T ≤ 50 °C	-15 °C ≤ T ≤ 50 °C	-15 °C ≤ T ≤ 50 °C
	Estimated load on cooling (W)	3500	5300	7100	10600	14000	15300
	Power input (W)	1164 (155-1465)	1590 (360-2130)	2280 (750-2860)	3900 (890-4200)	4500 (810-6450)	5250 (1030-6650)
<b>Heating</b>	Capacity (W)	3810 (1000-4470)	6010 (1500-6310)	8000 (2790-8560)	11720 (2780-12840)	16120 (4110-17590)	18180 (4400-20520)
	Energy efficiency class	A+	A+	A+	A+	A+	A+
	Energy Efficiency SCOP	4.1	4.1	4.2	4.0	4.0	4.0
	Heating operating range	-20 °C ≤ T ≤ 24 °C	-20 °C ≤ T ≤ 24 °C	-20 °C ≤ T ≤ 24 °C	-20 °C ≤ T ≤ 24 °C	-20 °C ≤ T ≤ 24 °C	-20 °C ≤ T ≤ 24 °C
	Estimated load on heating (W)	2700	4300	5600	8800	11500	12500
	Power input (W)	1285 (302-1423)	1615 (500-1850)	2000 (640-2500)	3300 (780-4000)	4600 (950-5800)	5150 (950-6600)
<b>Indoor unit</b>	Air flow (m <sup>3</sup> / h) - HI / MID / LOW	600 / 570 / 470	900 / 780 / 650	1200 / 1000 / 700	1700 / 1400 / 1100	2000 / 1700 / 1300	2200 / 1900 / 1500
	Dehumidifying capacity (L / h)	1.2	1.8	2.4	3.6	4.8	5.5
	Noise - Sound Pressure (dB (A)) - HI / MID / LOW	35 / 33 / 31	36.5 / 34 / 31	33.5 / 32.5 / 31	40 / 37 / 34	43.5 / 41.5 / 39.5	44.5 / 43 / 41.5
	Sound power level (dB)	≤ 52	≤ 53	≤ 56	≤ 62	≤ 65	≤ 66
	Packaging dimensions (mm)	860 x 540 x 285	925 x 850 x 298	1225 x 860 x 304	1425 x 860 x 304	1425 x 860 x 304	1425 x 860 x 354
	Product dimensions (mm)	700 x 506 x 200	700 x 750 x 245	1000 x 750 x 245	1200 x 750 x 245	1200 x 750 x 245	1200 x 750 x 300
	Gross / net weight (kg)	19.8 / 16.6	29 / 24.4	37.2 / 31.8	44.4 / 38.4	46.8 / 40.4	49.1 / 42.9
<b>Outdoor unit</b>	Noise - Sound Pressure (dB (A))	≤ 55.5	≤ 59	≤ 60	≤ 65	≤ 64.5	≤ 64
	Sound power level (dB)	≤ 62	≤ 62	≤ 69	≤ 70	≤ 73	≤ 74
	Refrigerant	R32	R32	R32	R32	R32	R32
	Bracket distance (mm)	452	511	663	673	634	634
	Packaging dimensions (mm)	887 x 337 x 610	915 x 370 x 615	995 x 398 x 740	1090 x 500 x 885	1095 x 495 x 1480	1095 x 495 x 1480
	Product dimensions (mm)	765 x 303 x 555	805 x 330 x 554	890 x 342 x 673	946 x 410 x 810	952 x 415 x 1333	952 x 415 x 1333
	Gross / net weight (kg)	29 / 26.6	35.2 / 32.5	46.9 / 43.9	85 / 80.5	118.3 / 103.7	121.2 / 107
<b>Connections</b>	Liquid phase pipe diameter	1 / 4"	1 / 4"	3 / 8"	3 / 8"	3 / 8"	3 / 8"
	Gas phase pipe diameter	3 / 8"	1 / 2"	5 / 8"	5 / 8"	5 / 8"	5 / 8"
	Maximum pipe length (m)	25	30	50	75	75	75
	Maximum height difference (m)	10	20	25	30	30	30
	Pre-filled pipe length (m)	5	5	5	5	5	5
	Gas refill (g / m)	12	12	24	24	24	24
<b>Interconnect cable</b>	Outdoor unit power supply (mm <sup>2</sup> )	3 x 2.5	3 x 2.5	3 x 2.5	5 x 2.5	5 x 2.5	5 x 2.5
	Indoor unit power supply (mm <sup>2</sup> )	3 x 1.5	3 x 1.5	3 x 1.5	3 x 1.5	3 x 1.5	3 x 1.5
	Connection (mm <sup>2</sup> )	4 x 1.5	4 x 1.5	4 x 1.5	4 x 1.5	4 x 1.5	4 x 1.5
Power Supply	~220-240 V / 1 / 50 Hz; Indoor and outdoor unit				~220-240 V / 1 / 50 Hz IU, ~380-415 V / 3 / 50 Hz OU		



# Multi- split systems DC Inverter







# Wide range of options

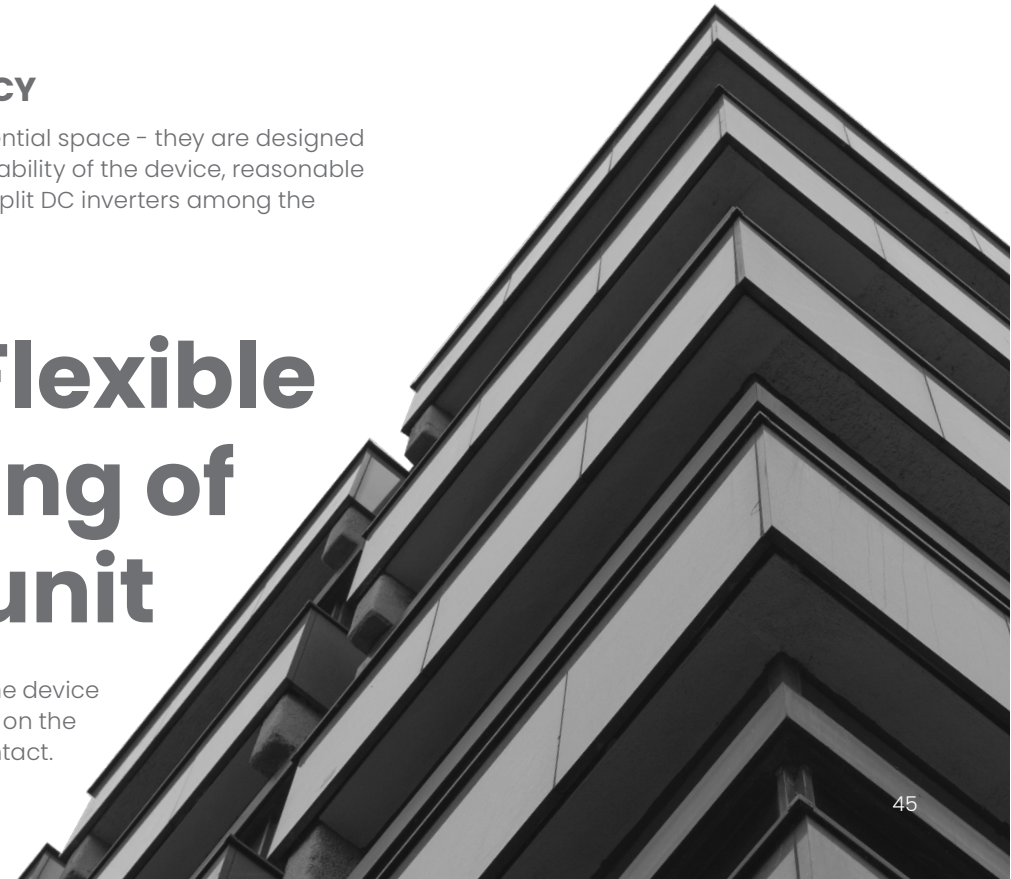
The wide range of outdoor units and the possibility of connecting 2 to 5 indoor units enable the wide application of these air conditioners with special emphasis on commercial and residential spaces. Indoor units come in 5 different versions: wall, cassette, floor, floor-ceiling and duct. It is possible to choose between 21 different indoor units with a capacity range from 2.22 kW to 7.03 kW.

## NEW TECHNOLOGICAL SOLUTIONS OF HIGH ENERGY EFFICIENCY

VIVAX air conditioners are the ideal solution for air conditioning of business or residential space - they are designed to meet the requirements of both the user and the space to be air-conditioned. Durability of the device, reasonable price and A++ class of energy efficiency are the best choice that ranks VIVAX multi split DC inverters among the leading air conditioners in this segment of air conditioning.

# Flexible positioning of the outdoor unit

The maximum length of the installation is 80 m high, which allows very easy positioning of the device in relation to the external dimensions of the building. The outdoor unit can easily be placed on the roof of the building or the courtyard side of the building to keep the outdoor appearance intact.





# Wall indoor units

## AERI | AEMI



Ionizer



Anti-corrosion protection - gold coating



Heating at a temp. of -20°C



3D DC Inverter



Wi-Fi ready



Multi compatibility



Biofilter



Anti-corrosion protection - gold coating



3D DC Inverter



Follow me function



Automatic operating mode



Wi-Fi ready

	Model	ACP-07CH21AEMI/I	ACP-09CH25AERI/I+	ACP-12CH35AERI/I+	ACP-18CH50AERI/I+
Indoor unit	Capacity (W)	2052	2638	3517	5275
	Capacity (W)	2346	2931	3810	5568
	Air flow (m <sup>3</sup> / h) - HI / MID / LOW	520 / 460 / 340	483 / 362 / 303	584 / 477 / 395	730 / 500 / 420
	Refrigerant	R32	R32	R32	R32
	Dehumidifying capacity (L / h)	1.0	1.0	1.2	1.8
	Noise - Sound Pressure (dB (A)) - HI / MID / LOW / SI	40 / 30 / 26 / 21	36.5 / 29 / 24 / 20	39.5 / 33 / 25 / 21	43 / 33.5 / 28 / 23
	Sound power level (dB)	≤ 54	≤ 55	≤ 55	≤ 57
	Packaging dimensions (mm)	870 x 270 x 360	875 x 285 x 380	875 x 285 x 380	1045 x 305 x 410
	Product dimensions (mm)	805 x 194 x 285	802 x 189 x 297	802 x 189 x 297	965 x 215 x 319
	Gross / net weight (kg)	9.5 / 7.5	11.1 / 8.6	11.1 / 8.6	14.2 / 10.9
Connection	Liquid phase pipe diameter	1 / 4"	1 / 4"	1 / 4"	1 / 4"
	Gas phase pipe diameter	3 / 8"	3 / 8"	3 / 8"	1 / 2"
Interconnect cable	Connection (mm <sup>2</sup> )	4 x 1.5	4 x 1.5	4 x 1.5	4 x 1.5
	Power Supply	~220-240 V / 1 / 50 Hz; Outdoor unit			

## Floor indoor units

# CT AERI



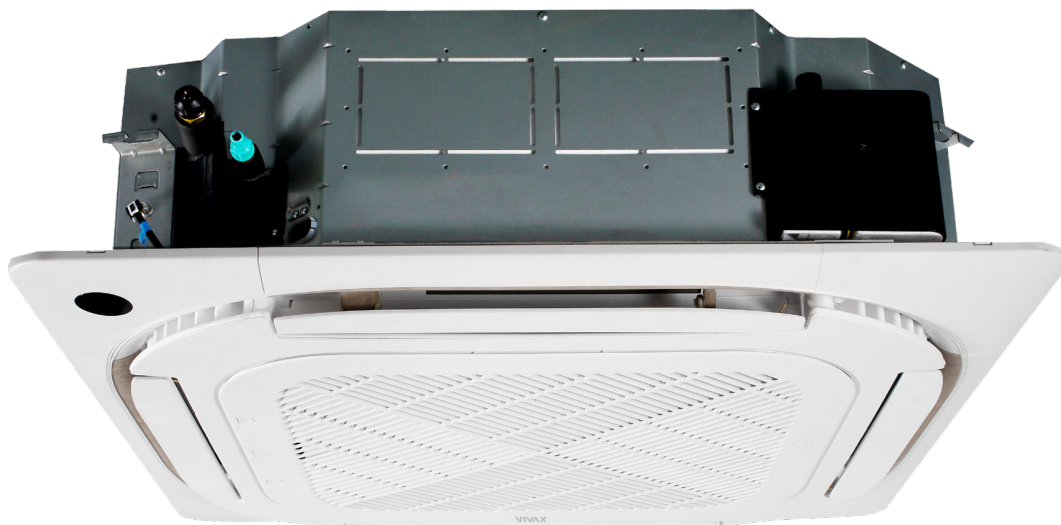
## Floor-ceiling indoor units

# CF AERI






	Model	ACP-09CT25AERI/i3	ACP-12CT35AERI/i3	ACP-18CT50AERI/i3
❄️	Capacity (W)	2638	3517	4982
	Cooling operating range	-15 °C ≤ T ≤ 50 °C	-15 °C ≤ T ≤ 50 °C	-15 °C ≤ T ≤ 50 °C
	<hr/>			
☀️	Capacity (W)	2931	3810	4982
	Heating operating range	-20 °C ≤ T ≤ 24 °C	-20 °C ≤ T ≤ 24 °C	-20 °C ≤ T ≤ 24 °C
Indoor unit	Air flow (m³ / h) - HI / MID / LOW	650 / 580 / 490	650 / 580 / 490	780 / 690 / 600
	Refrigerant	R32	R32	R32
	Dehumidifying capacity (L / h)	1.0	1.2	1.8
	Noise - Sound Pressure (dB (A)) - HI / MID / LOW	37 / 34 / 27	37 / 34 / 27	41 / 38 / 32
	Sound power level (dB)	≤ 54	≤ 54	≤ 55
	Packaging dimensions (mm)	903 x 731 x 295	903 x 731 x 295	903 x 731 x 295
	Product dimensions (mm)	793 x 621 x 200	793 x 621 x 200	793 x 621 x 200
	Gross / net weight (kg)	18.8 / 14.9	18.8 / 14.9	18.8 / 14.9
Connections	Liquid phase pipe diameter	1 / 4"	1 / 4"	1 / 4"
	Gas phase pipe diameter	3 / 8"	3 / 8"	1 / 2"
Interconnect cable	Connection (mm²)	4 x 1.5	4 x 1.5	4 x 1.5
	Power Supply	~220-240 V / 1 / 50 Hz; Outdoor unit		

	Model	ACP-18CF50AERI/i3
❄️	Capacity (W)	5280
	Cooling operating range	-15 °C ≤ T ≤ 50 °C
☀️	Capacity (W)	5570
	Heating operating range	-20 °C ≤ T ≤ 24 °C
Indoor unit	Air flow (m³ / h) - HI / MID / LOW	958 / 839 / 723
	Refrigerant	R32
	Dehumidifying capacity (L / h)	1.8
	Noise - Sound Pressure (dB (A)) - HI / MID / LOW / SI	43.5 / 41 / 36.5 / 24
	Sound power level (dB)	≤ 57
	Packaging dimensions (mm)	1145 x 755 x 318
	Product dimensions (mm)	1068 x 675 x 235
	Gross / net weight (kg)	33.3 / 28
Connections	Liquid phase pipe diameter	1 / 4"
	Gas phase pipe diameter	1 / 2"
Interconnect cable	Connection (mm²)	4 x 1.5
	Power Supply	~220-240 V / 1 / 50 Hz; Outdoor unit



# Cassette indoor units



## CC AERI

-  R32 gas
-  Night mode
-  1.0 W Standby
-  Dust filter
-  Self-cleaning
-  3D DC inverter
-  Error detection and display
-  Heating at a temp. of -20 °C
-  Cooling at a temp. of -15 °C
-  Follow me function
-  Last mode memory
-  Timer
-  Louver Position Memory
-  Condensate drain pump
-  Wired control device
-  360° air flow



### Model

**ACP-09CC25AERI/i2    ACP-12CC35AERI/i3s    ACP-18CC50AERI/i3s**

	Capacity (W)	2638	3517	5280
	Cooling operating range	-15 °C ≤ T ≤ 50 °C	-15 °C ≤ T ≤ 50 °C	-15 °C ≤ T ≤ 50 °C
	Capacity (W)	2931	3810	6568
	Heating operating range	-20 °C ≤ T ≤ 24 °C	-20 °C ≤ T ≤ 24 °C	-20 °C ≤ T ≤ 24 °C
<b>Indoor unit</b>	Air flow (m³ / h) -HI / MID / LOW	580 / 500 / 450	620 / 520 / 330	660 / 540 / 300
	Refrigerant	R32	R32	R32
	Dehumidifying capacity (L / h)	1.0	1.2	1.8
	Noise - Sound Pressure (dB (A)) -HI / MID / LOW	38 / 33 / 29	42 / 38.5 / 31.5	44 / 41 / 31.5
	Sound power level (dB)	≤ 53	≤ 55	≤ 56
	Product packaging dimensions (mm)	675 x 640 x 295	715 x 640 x 295	715 x 640 x 295
	Panel packaging dimensions (mm)	715 x 715 x 125	715 x 700 x 115	715 x 700 x 115
	Product dimensions (mm)	570 x 570 x 260	570 x 570 x 245	570 x 570 x 245
	Panel dimension (mm)	620 x 620 x 50	620 x 620 x 50	620 x 620 x 50
	Gross / net panel weight (kg)	4.5 / 2.5	4.3 / 2.7	4.3 / 2.7
	Gross / net product weight (kg)	19.2 / 14.5	18.8 / 16.1	19 / 16.2
<b>Connections</b>	Liquid phase pipe diameter	1 / 4"	1 / 4"	1 / 4"
	Gas phase pipe diameter	3 / 8"	3 / 8"	1 / 2"
<b>Interconnect cable</b>	Connection (mm²)	4 x 1.5	4 x 1.5	4 x 1.5
	Power Supply	~220-240 V / 1 / 50 Hz; Outdoor unit		



## Duct indoor units

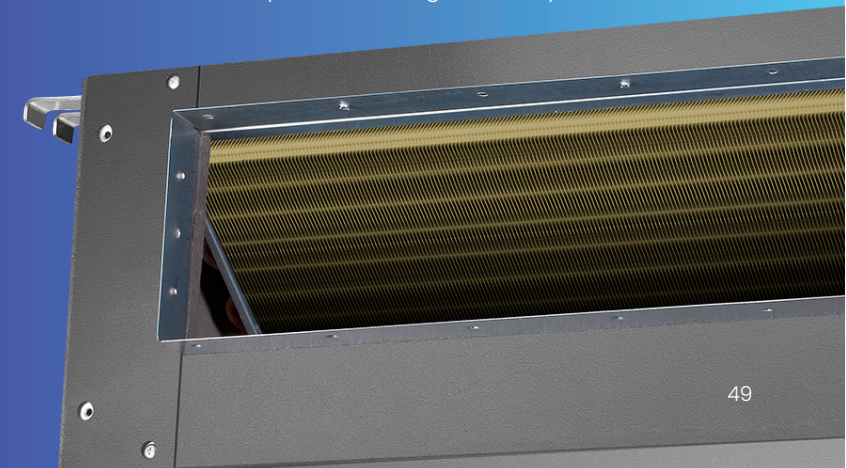
# DT AERI



	Model	ACP-12DT35AERI/I3s	ACP-18DT50AERI/I3s
❄️	Capacity (W)	3517	5280
	Cooling operating range	-15 °C ≤ T ≤ 50 °C	-15 °C ≤ T ≤ 50 °C
☀️	Capacity (W)	3810	5568
	Heating operating range	-20 °C ≤ T ≤ 24 °C	-20 °C ≤ T ≤ 24 °C
Indoor unit	Air flow (m³ / h) -HI / MID / LOW	600 / 570 / 470	900 / 780 / 650
	Refrigerant	R32	R32
	Dehumidifying capacity (L / h)	1.2	1.8
	Noise - Sound Pressure (dB (A)) -HI / MID / LOW	35 / 33 / 31	36.5 / 34 / 31
	Sound power level (dB)	≤ 52	≤ 53
	Packaging dimensions (mm)	860 x 540 x 285	925 x 850 x 298
	Product dimensions (mm)	700 x 506 x 200	700 x 750 x 245
	Gross / net weight (kg)	19.8 / 16.6	29 / 24.4
Connections	Liquid phase pipe diameter	1 / 4"	1 / 4"
	Gas phase pipe diameter	3 / 8"	1 / 2"
Interconnect cable	Connection (mm²)	4 x 1.5	4 x 1.5
	Power Supply	~220-240 V / 1 / 50 Hz; Outdoor unit	

### PRIMEGUARD COATING FOR LONG-LASTING PERFORMANCE

The unique anti-corrosion gold coating on the heat exchanger can withstand salt air, rain and other corrosive elements. It also effectively prevents the growth of bacteria and improves heating efficiency.



Outdoor units

# COFM AERI

A++ Cooling SEER 6.9  
A+ Heating SCOP 4.0



R32 gas



3D DC Inverter



Heating at a temp. of -20 °C



Cooling at a temp. of -15 °C



The protective cover of the valve



Error detection and display



Chasis heating belt



Compressor heating belt



Last mode memory



## Flexible installation

The maximum length of the cooling pipes can be up to 80 m. The maximum difference in height between the indoor and outdoor unit can be up to 30 m.

	Model	ACP-14COFM40AERis R32	ACP-18COFM50AERis R32	ACP-21COFM60AERis R32	ACP-27COFM79AERis R32	ACP-28COFM82AERI R32	ACP-36COFM105AERI R32	ACP-42COFM123AERis R32
Cooling	Capacity (W)	4103 (1611-4982)	5275 (2286-5715)	6155 (2491-7034)	7913 (3077-8909)	8206 (3077-11137)	10550 (3077-11195)	12104 (3165-13598)
	Energy efficiency class	A++	A++	A++	A++	A++	A++	A++
	Energy Efficiency SEER	6.9	6.9	6.9	6.7	6.9	6.7	6.9
	Cooling operating range	-15 °C ≤ T ≤ 50 °C	-15 °C ≤ T ≤ 50 °C	-15 °C ≤ T ≤ 50 °C	-15 °C ≤ T ≤ 50 °C	-15 °C ≤ T ≤ 50 °C	-15 °C ≤ T ≤ 50 °C	-15 °C ≤ T ≤ 50 °C
	Estimated load on cooling (W)	4100	5300	6100	7900	8200	10500	12100
	Power input (W)	1270 (100-1670)	1635 (160-2000)	1900 (180-2200)	2450 (210-2960)	2540 (210-3450)	3233 (230-4285)	3747 (230-4650)
Heating	Capacity (W)	4396 (1612-4982)	5570 (2403-5744)	6154 (1614-6593)	8206 (2110-8471)	8206 (2345-8528)	10550 (3278-11943)	12103 (3370-12011)
	Energy efficiency class	A+	A+	A+	A+	A+	A+	A+
	Energy Efficiency SCOP	4.0	4.0	4.0	4.0	4.0	4.0	4.0
	Heating operating range	-20 °C ≤ T ≤ 24 °C	-20 °C ≤ T ≤ 24 °C	-20 °C ≤ T ≤ 24 °C	-20 °C ≤ T ≤ 24 °C	-20 °C ≤ T ≤ 24 °C	-20 °C ≤ T ≤ 24 °C	-20 °C ≤ T ≤ 24 °C
	Estimated load on heating	3.8	4.5	5.1	5.7	5.9	8.2	9.3
	Power input (W)	1185 (240-1525)	1500 (270-1750)	1660 (250-1750)	2210 (410-2330)	2210 (450-2708)	2880 (603-4483)	3433 (550-3850)
Outdoor unit	Refrigerant	R32	R32	R32	R32	R32	R32	R32
	Maximum number of indoor units	2	2	3	3	4	4	5
	Noise - Sound Pressure (dB (A))	≤ 54	≤ 54	≤ 56	≤ 56	≤ 58	≤ 59	≤ 60
	Sound power level (dB)	≤ 64	≤ 65	≤ 70	≤ 70	≤ 70	≤ 70	≤ 70
	Bracket distance (mm)	514	514	663	663	673	673	673
	Packaging dimensions (mm)	915 x 370 x 615	915 x 370 x 615	1030 x 438 x 750	1030 x 438 x 750	1090 x 500 x 885	1090 x 500 x 885	1090 x 500 x 885
	Product dimensions (mm)	805 x 330 x 554	805 x 330 x 554	890 x 342 x 673	890 x 342 x 673	946 x 410 x 810	946 x 410 x 810	946 x 410 x 810
Gross / net weight (kg)	34.7 / 31.6	38 / 35	47.1 / 43.3	51.8 / 48	67.7 / 62.1	75.6 / 68.8	79.5 / 74.1	
Connections	Liquid phase pipe diameter	1 / 4"	1 / 4"	1 / 4"	1 / 4"	1 / 4"	4" x 1 / 4"	5" x 1 / 4"
	Gas phase pipe diameter	3 / 8"	3 / 8"	3 / 8"	3 / 8"	3 x 3 / 8" + 1 x 1 / 2"	3 x 3 / 8" + 1 x 1 / 2"	4 x 3 / 8" + 1 x 1 / 2"
	Maximum pipe length (m)	40	40	60	60	80	80	80
	Maximum height difference (m) (OU above IU / OU below IU)	15 / 10	15 / 10	15 / 10	15 / 10	15 / 10	15 / 10	15 / 10
	Pre-filled pipe length (m)	15	15	22.5	22.5	30	30	37.5
	Gas refill (For Liquid phase pipe diameter 1/4")	12 g / m	12 g / m	12 g / m	12 g / m	12 g / m	12 g / m	12 g / m
Interconnect cable	Connection (mm <sup>2</sup> )	3 x 2.5	3 x 2.5	3 x 2.5	3 x 2.5	3 x 2.5	3 x 2.5	3 x 4.0
	Power Supply	~220-240 V / 1 / 50 Hz; Outdoor unit						

# Multi-split combinations

## ACP-14COFM40AERI R32

Cooling (kW)						Heating (kW)					
Unit	A	B	C	D	Total	A	B	C	D	Total	
7+7	2.05	2.05	—	—	4.10 (1.7-5.30)	2.05	2.05	—	—	4.27 (1.67-5.03)	
7+9	1.81	2.33	—	—	4.15 (1.9-5.39)	1.93	2.48	—	—	4.41 (1.66-4.99)	
7+12	1.54	2.64	—	—	4.17 (1.7-5.52)	1.85	2.83	—	—	4.48 (1.67-5.07)	
9+9	2.06	2.06	—	—	4.13 (2.0-5.45)	2.21	2.21	—	—	4.43 (1.65-4.95)	
9+12	1.78	2.37	—	—	4.15 (1.7-5.57)	1.91	2.55	—	—	4.46 (1.66-5.04)	

## ACP-18COFM50AERI R32

Cooling (kW)						Heating (kW)					
Unit	A	B	C	D	Total	A	B	C	D	Total	
7+7	2.05	2.05	—	—	4.15 (1.33-5.64)	2.05	2.05	—	—	4.43 (1.72-5.42)	
7+9	2.05	2.64	—	—	4.65 (1.34-5.72)	2.05	2.64	—	—	4.80 (1.71-5.38)	
7+12	1.94	3.32	—	—	5.26 (1.32-6.99)	2.10	3.61	—	—	5.71 (1.72-5.45)	
9+9	2.64	2.64	—	—	5.26 (1.37-5.81)	2.64	2.64	—	—	5.58 (1.70-5.34)	
9+12	2.25	3.00	—	—	5.24 (1.34-5.96)	2.43	3.24	—	—	5.68 (1.71-5.42)	
12+12	2.64	2.64	—	—	5.27 (1.31-6.08)	2.87	2.87	—	—	5.74 (1.71-5.48)	

## ACP-21COFM60AERI R32

Cooling (kW)						Heating (kW)					
Unit	A	B	C	D	Total	A	B	C	D	Total	
7+7	2.05	2.05	—	—	4.17 (2.45-6.10)	2.05	2.05	—	—	4.26 (2.51-6.97)	
7+9	2.05	2.64	—	—	4.65 (2.49-6.20)	2.05	2.64	—	—	4.81 (2.50-6.93)	
7+12	2.05	3.52	—	—	5.56 (2.43-6.40)	2.05	3.52	—	—	5.78 (2.51-7.05)	
7+18	1.73	4.44	—	—	6.17 (2.62-6.81)	1.84	4.72	—	—	6.56 (2.56-7.20)	
9+9	2.64	2.64	—	—	5.26 (2.53-6.30)	2.64	2.64	—	—	5.50 (2.49-6.88)	
9+12	2.64	3.52	—	—	6.12 (2.46-6.48)	2.64	3.52	—	—	6.39 (2.50-7.01)	
9+18	2.05	4.10	—	—	6.15 (2.65-6.86)	2.18	4.36	—	—	6.53 (2.55-7.17)	
12+12	3.10	3.10	—	—	6.19 (2.41-6.63)	3.23	3.23	—	—	6.46 (2.51-7.09)	
7+7+7	2.05	2.05	2.05	—	6.10 (2.67-6.75)	2.05	2.05	2.05	—	6.41 (2.57-7.30)	
7+7+9	1.87	1.87	2.40	—	6.14 (2.70-6.79)	1.94	1.94	2.50	—	6.38 (2.57-7.27)	
7+7+12	1.68	1.68	2.87	—	6.23 (2.65-6.89)	1.73	1.73	2.97	—	6.42 (2.57-7.32)	
7+9+9	1.73	2.23	2.23	—	6.18 (2.72-6.84)	1.78	2.29	2.29	—	6.36 (2.56-7.24)	
9+9+9	2.05	2.05	2.05	—	6.18 (2.75-6.89)	2.11	2.11	2.11	—	6.33 (2.55-7.21)	
9+9+12	1.87	1.87	2.50	—	6.24 (2.70-6.98)	1.91	1.91	2.55	—	6.38 (2.56-7.27)	

## ACP-27COFM79AERI R32

Cooling (kW)						Heating (kW)					
Unit	A	B	C	D	Total	A	B	C	D	Total	
7+7	2.05	2.05	—	—	4.18 (3.13-7.83)	2.05	2.05	—	—	4.44 (2.99-8.42)	
7+9	2.05	2.64	—	—	4.71 (3.17-7.79)	2.05	2.64	—	—	4.95 (2.98-8.34)	
7+12	2.05	3.52	—	—	5.56 (3.12-8.13)	2.05	3.52	—	—	5.87 (2.98-8.50)	
7+18	2.05	5.28	—	—	7.33 (3.31-8.87)	2.05	5.28	—	—	7.51 (3.05-8.71)	
9+9	2.64	2.64	—	—	5.26 (3.20-7.94)	2.64	2.64	—	—	5.51 (2.96-8.25)	
9+12	2.64	3.52	—	—	6.19 (3.16-8.26)	2.64	3.52	—	—	6.48 (2.97-8.46)	
9+18	2.64	5.28	—	—	7.90 (3.35-8.97)	2.64	5.28	—	—	8.10 (3.04-8.68)	
12+12	3.52	3.52	—	—	7.09 (3.11-8.54)	3.52	3.52	—	—	7.38 (2.98-8.56)	
12+18	3.13	4.69	—	—	7.82 (3.30-9.16)	3.27	4.90	—	—	8.17 (3.05-8.75)	
7+7+7	2.05	2.05	2.05	—	6.08 (3.39-8.78)	2.05	2.05	2.05	—	6.48 (3.13-9.75)	
7+7+9	2.05	2.05	2.64	—	6.74 (3.43-8.87)	2.05	2.05	2.64	—	6.92 (3.12-9.67)	
7+7+12	2.05	2.05	3.52	—	7.64 (3.36-9.07)	2.05	2.05	3.52	—	7.89 (3.13-9.80)	
7+7+18	1.73	1.73	4.44	—	7.90 (3.54-9.46)	1.80	1.80	4.64	—	8.25 (3.16-9.97)	
7+9+9	2.05	2.64	2.64	—	7.26 (3.47-8.97)	2.05	2.64	2.64	—	7.55 (3.12-9.63)	
7+9+12	1.98	2.54	3.39	—	7.91 (3.40-9.16)	2.05	2.63	3.51	—	8.20 (3.12-9.76)	
7+9+18	1.64	2.10	4.21	—	7.94 (3.58-9.52)	1.69	2.18	4.35	—	8.22 (3.16-9.94)	
7+12+12	1.79	3.06	3.06	—	7.92 (3.33-9.33)	1.87	3.20	3.20	—	8.27 (3.13-9.85)	
9+9+9	2.64	2.64	2.64	—	7.85 (3.51-9.05)	2.64	2.64	2.64	—	8.26 (3.11-9.56)	
9+9+12	2.36	2.36	3.14	—	7.86 (3.44-9.24)	2.48	2.48	3.31	—	8.27 (3.11-9.71)	
9+12+12	2.14	2.85	2.85	—	7.85 (3.38-9.39)	2.25	3.00	3.00	—	8.24 (3.12-9.62)	
12+12+12	2.65	2.65	2.65	—	7.95 (3.30-9.52)	2.75	2.75	2.75	—	8.24 (3.12-9.90)	

## ACP-28COFM82AERI R32

Cooling (kW)						Heating (kW)					
Unit	A	B	C	D	Total	A	B	C	D	Total	
7+7	2.05	2.05	—	—	4.12 (3.14-8.40)	2.05	2.05	—	—	4.51 (2.93-8.70)	
7+9	2.05	2.64	—	—	4.65 (3.18-8.59)	2.05	2.64	—	—	4.86 (2.90-8.57)	
7+12	2.05	3.52	—	—	5.60 (3.13-9.00)	2.05	3.52	—	—	5.82 (2.92-8.92)	
7+18	2.05	5.28	—	—	7.41 (3.33-8.88)	2.05	5.28	—	—	7.60 (3.05-9.31)	
9+9	2.64	2.64	—	—	5.31 (3.22-8.77)	2.64	2.64	—	—	5.48 (2.88-8.42)	
9+12	2.64	3.52	—	—	6.21 (3.17-9.16)	2.64	3.52	—	—	6.40 (2.90-8.80)	
9+18	2.64	5.28	—	—	7.98 (3.36-10.00)	2.64	5.28	—	—	8.25 (3.03-9.24)	
12+12	3.52	3.52	—	—	7.08 (3.12-9.50)	3.52	3.52	—	—	7.50 (2.91-9.11)	
12+18	3.25	4.87	—	—	8.12 (3.31-10.23)	3.41	5.12	—	—	8.53 (3.04-9.44)	
7+7+7	2.05	2.05	2.05	—	6.10 (3.40-9.80)	2.05	2.05	2.05	—	6.41 (3.13-9.73)	
7+7+9	2.05	2.05	2.64	—	6.74 (3.44-9.91)	2.05	2.05	2.64	—	6.99 (3.12-9.65)	
7+7+12	2.05	2.05	3.52	—	7.63 (3.37-10.15)	2.05	2.05	3.52	—	7.94 (3.13-9.86)	
7+7+18	1.77	1.77	4.56	—	8.11 (3.56-10.62)	1.85	1.85	4.76	—	8.47 (3.19-10.17)	
7+9+9	2.05	2.64	2.64	—	7.24 (3.48-10.01)	2.05	2.64	2.64	—	7.53 (3.10-9.56)	
7+9+12	2.05	2.64	3.52	—	8.11 (3.41-10.25)	2.05	2.64	3.52	—	8.40 (3.12-9.82)	
7+9+18	1.68	2.16	4.32	—	8.15 (3.59-10.70)	1.74	2.23	4.47	—	8.44 (3.18-10.13)	
7+12+12	1.83	3.14	3.14	—	8.12 (3.34-10.46)	1.90	3.26	3.26	—	8.43 (3.06-9.98)	
7+12+18	1.54	2.64	3.95	—	8.13 (3.53-10.87)	1.59	2.73	4.09	—	8.42 (3.18-10.24)	
9+9+9	2.64	2.64	2.64	—	7.94 (3.52-10.12)	2.64	2.64	2.64	—	8.28 (3.09-9.48)	
9+9+12	2.38	2.38	3.18	—	7.95 (3.45-10.35)	2.54	2.54	3.38	—	8.45 (3.10-9.74)	
9+9+18	2.02	2.02	4.04	—	8.08 (3.62-10.78)	2.10	2.10	4.20	—	8.40 (3.17-10.08)	
9+12+12	2.20	2.93	2.93	—	8.06 (3.38-10.55)	2.29	3.05	3.05	—	8.40 (3.03-9.95)	
12+12+12	2.72	2.72	2.72	—	8.15 (3.31-10.73)	2.60	2.60	2.60	—	8.40 (2.98-10.09)	
7+7+7+7	2.05	2.05	2.05	2.05	8.09 (3.62-10.64)	2.05	2.05	2.05	2.05	8.47 (3.23-10.17)	
7+7+7+9	1.90	1.90	1.90	2.44	8.13 (3.65-10.72)	1.97	1.97	1.97	2.53	8.44 (3.21-10.13)	
7+7+7+12	1.72	1.72	1.72	2.95	8.11 (3.60-10.88)	1.79	1.79	1.79	3.06	8.42 (3.23-10.24)	
7+7+9+9	1.76	1.76	2.27	2.27	8.06 (3.67-10.79)	1.86	1.86	2.39	2.39	8.51 (3.20-10.09)	
7+7+9+12	1.63	1.63	2.09	2.79	8.14 (3.63-10.95)	1.70	1.70	2.19	2.91	8.50 (3.21-10.20)	
7+9+9+9	1.67	2.14	2.14	2.14	8.10 (3.70-10.87)	1.74	2.24	2.24	2.24	8.48 (3.18-10.04)	
7+9+9+12	1.53	1.96	1.96	2.61	8.06 (3.65-11.01)	1.60	2.06	2.06	2.75	8.47 (3.15-10.17)	
9+9+9+9	2.03	2.03	2.03	2.03	8.13 (3.72-10.93)	2.11	2.11	2.11	2.11	8.44 (3.20-9.99)	





# Overview of outdoor units

**720 x 270 x 495 mm**  
Bracket distance 452 mm



Name of outdoor unit	Compatible indoor units
ACP-09CH25AEMI/O3	ACP-09CH25AEMI/I3
ACP-09CH25AEQI/O3	ACP-09CH25AEQI/I3
ACP-12CH35AEMI/O3	ACP-12CH35AEMI/I3
ACP-12CH35AEQI/O3	ACP-12CH35AEQI/I3
ACP-12CH35AEXI/O3	ACP-12CH35AEXI/I3
ACP-12CH35AEMI/O	ACP-12CH35AEMI/I
ACP-12CH35AENI/O	ACP-12CH35AENI/I

**765 x 303 x 555 mm**  
Bracket distance 452 mm



Name of outdoor unit	Compatible indoor units
ACP-09CH25AERI/O+	ACP-09CH25AERI/I+
ACP-09CH25AERI/O+	ACP-09CH25AERI/I+ GOLD
ACP-09CH25AERI/O+	ACP-09CH25AERI/I+ SILVER
	ACP-12CH35AEMI/I+
ACP-12CH35AEMI/O+	ACP-12CH35AEMI/I+ GOLD
	ACP-12CH35AEMI/I+ SILVER
ACP-12CH35AERI/O+	ACP-12CH35AERI/I+
	ACP-12CH35AERI/I+ GOLD
	ACP-12CH35AERI/I+ SILVER
ACP-12CH35AERI/O+	ACP-12CH35AERI/I+ RED
	ACP-12CH35AERI/I+ SILVER MIRROR
	ACP-12CC35AERI/I3s
ACP-12LCAC35AERI/Os	ACP-12CT35AERI/I3
	ACP-12DT35AERI/I3s

**805 x 330 x 554 mm**  
Bracket distance 511 mm



Name of outdoor unit	Compatible indoor units
ACP-12CH35AEYI/Os	ACP-12CH35AEYI/Is
ACP-18CH50AERI/O+	ACP-18CH50AERI/I+ SILVER MIRROR
	ACP-18CH50AERI/I+
ACP-18CH50AEMI/O2s	ACP-18CH50AEMI/I2s
ACP-18CH50AEQI/O2s	ACP-18CH50AEQI/I2s
	ACP-18CC50AERI/I3s
ACP-18LCAC50AERI/Os	ACP-18CT50AERI/I3
	ACP-18CF50AERI/I3
	ACP-18DT50AERI/I3s
ACP-18CH50AENI/O	ACP-18CH50AENI/I
	ACP-18CH50AEMI/I+
	ACP-18CH50AEMI/I+ SILVER
ACP-18CH50AEMI/O+	ACP-18CH50AEMI/I+ GOLD
	ACP-18CH50AEMI/I+ GRAY MIRROR

**890 x 342 x 673 mm**

Bracket distance 663 mm



**Name of outdoor unit**

ACP-24CH70AEMI/O2s  
ACP-24CH70AEQI/O2s  
ACP-24LCAC70AERI/Os  
ACP-24FS70AERI/O3  
ACP-24DT70AERI/O3

**Compatible indoor units**

ACP-24CH70AEMI/I2s  
ACP-24CH70AEQI/I2s  
ACP-24CC70AERI/I3  
ACP-24CF70AERI/I3  
ACP-24FS70AERI/I3  
ACP-24DT70AERI/I3s

**946 x 410 x 810 mm**

Bracket distance 673 mm



**Name of outdoor unit**

ACP-36LCAC105AERI/Os

**Compatible indoor units**

ACP-36DT105AERI/I3s  
ACP-36CC105AERI/I3  
ACP-36CF105AERI/I3

**952 x 415 x 1333 mm**

Bracket distance 634 mm



**Name of outdoor unit**

ACP-48FS140AERI/O2  
ACP-48LCAC140AERI/O2s  
ACP-55LCAC160AERI/O2s  
ACP-55FS160AERI/O3

**Compatible indoor units**

ACP-48FS140AERI/I2  
ACP-48CC140AERI/I3  
ACP-48CF140AERI/I3  
ACP-48DT140AERI/I3s  
ACP-55CC160AERI/I3  
ACP-55CF160AERI/I3  
ACP-55DT160AERI/I3s  
ACP-55FS160AERI/I3

**Motherboard cooling on the outdoor unit**

The newly designed cooling circuits use improved airing technology – both for efficient cooling and for heat exchangers and electronic boxes, which significantly improves the performance of the unit at high ambient temperatures. It is 5 times more efficient in heat transfer compared to conventional technology.